

For Research Use Only

RHOT1 Recombinant antibody, PBS Only (Detector)

Catalog Number: 84055-6-PBS



Basic Information

Catalog Number:

84055-6-PBS

Concentration:

1 mg/ml

Source:

Rabbit

Isotype:

IgG

Immunogen Catalog Number:

AG15605

GenBank Accession Number:

BC060781

GeneID (NCBI):

55288

UNIPROT ID:

Q8IXI2

Full Name:

ras homolog gene family, member T1

Calculated MW:

618 aa, 71 kDa

Purification Method:

Protein A purification

CloneNo.:

241157F10

Applications

Tested Applications:

Sandwich ELISA, Indirect ELISA, Sample test

Species Specificity:

human

Background Information

Storage

Storage:

Store at -80°C.

The product is shipped with ice packs. Upon receipt, store it immediately at -80°C

Storage Buffer:

PBS only, pH7.3

For technical support and original validation data for this product please contact:

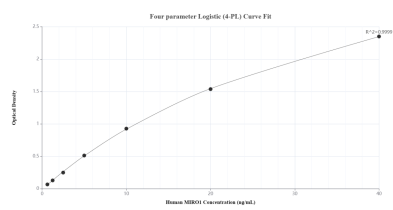
T: 4006900926

E: Proteintech-CN@ptglab.com

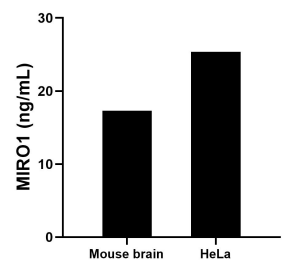
W: ptgcn.com

This product is exclusively available under Proteintech Group brand and is not available to purchase from any other manufacturer.

Selected Validation Data



Sandwich ELISA standard curve of MP01000-4, Human MIRO1 Recombinant Matched Antibody Pair - PBS only. 84055-7-PBS was coated to a plate as the capture antibody and incubated with serial dilutions of standard Ag15605. 84055-6-PBS was HRP conjugated as the detection antibody. Range: 0.625-40 ng/mL.



The mean MIRO1 concentration was determined to be 17.32 ng/mL in mouse brain tissue extract based on a 4.60 mg/mL extract load and 25.35 ng/mL in HeLa cell extract based on a 4.60 mg/mL extract load.