

For Research Use Only

GPAM Recombinant antibody, PBS Only (Capture)

Catalog Number: 84054-5-PBS



Basic Information

| | | |
|-------------------------------------|----------------------------------------------------------------------|------------------------------------------------|
| Catalog Number: 84054-5-PBS | GenBank Accession Number: BC030783 | Purification Method: Protein A purification |
| Concentration: 1 mg/ml | GeneID (NCBI): 57678 | CloneNo.: 241144H6 |
| Source: Rabbit | UNIPROT ID: Q9HCL2 | |
| Isotype: IgG | Full Name: glycerol-3-phosphate acyltransferase, mitochondrial | |
| Immunogen Catalog Number: AG3120 | Calculated MW: 828 aa, 94 kDa | |
| | Observed MW: 90-92 kDa | |

Applications

Tested Applications:
WB, Cytometric bead array, Indirect ELISA

Species Specificity:
human, mouse, rat

Background Information

GPAM (Glycerol-3-Phosphate Acyltransferase, Mitochondrial) is a Protein Coding gene. This gene encodes a mitochondrial enzyme which prefers saturated fatty acids as its substrate for the synthesis of glycerolipids. This metabolic pathway's first step is catalyzed by the encoded enzyme. Two forms for this enzyme exist, one in the mitochondria and one in the endoplasmic reticulum. Two alternatively spliced transcript variants have been described for this gene. Diseases associated with GPAM include Rhizomelic Chondrodysplasia Punctata, Type 2 and Congenital Generalized Lipodystrophy. GPAM can be detected as 90-92 kDa.

Storage

Storage:
Store at -80°C.
The product is shipped with ice packs. Upon receipt, store it immediately at -80°C

Storage Buffer:
PBS Only

For technical support and original validation data for this product please contact:

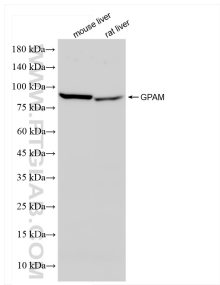
T: 4006900926

E: Proteintech-CN@ptglab.com

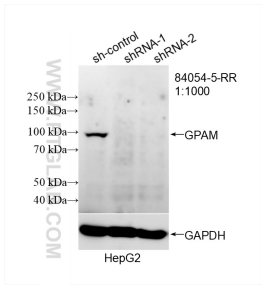
W: ptgcn.com

This product is exclusively available under Proteintech Group brand and is not available to purchase from any other manufacturer.

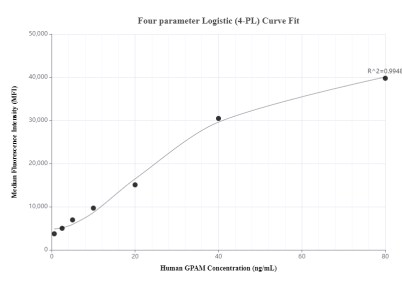
Selected Validation Data



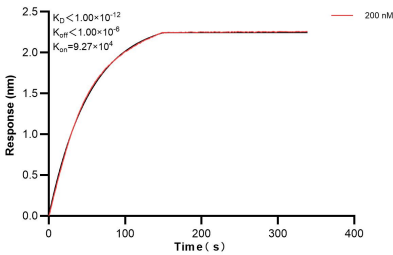
Various lysates were subjected to SDS PAGE followed by western blot with 84054-5-RR (GPAM antibody) at dilution of 1:3000 incubated at room temperature for 1.5 hours. This data was developed using the same antibody clone with 84054-5-PBS in a different storage buffer formulation.



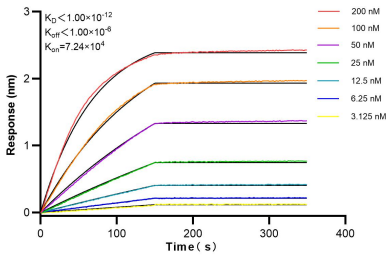
WB result of GPAM antibody (84054-5-RR; 1:1000; incubated at room temperature for 1.5 hours) with sh-Control and sh-GPAM transfected HepG2 cells. This data was developed using the same antibody clone with 84054-5-PBS in a different storage buffer formulation.



Cytometric bead array standard curve of MP00994-2, GPAM Recombinant Matched Antibody Pair, PBS Only. Capture antibody: 84054-5-PBS. Detection antibody: 84054-1-PBS. Standard: Ag3120. Range: 0.625-80 ng/mL.



Bi-layer interferometry (BLI) kinetic assay of 84054-5-PBS against Human GPAM was performed. The affinity constant is below 1 pM.



Bi-layer interferometry (BLI) kinetic assays of 84054-5-RR against Human GPAM were performed. The affinity constant is below 1 pM.