

For Research Use Only

# HER2/ErbB2,p185-Specific Recombinant antibody, PBS Only

Catalog Number: 84046-1-PBS



## Basic Information

Catalog Number:

84046-1-PBS

Concentration:

1 mg/ml

Source:

Rabbit

Isotype:

IgG

GenBank Accession Number:

BC167147

GeneID (NCBI):

2064

UNIPROT ID:

P04626

Full Name:

v-erb-b2 erythroblastic leukemia  
viral oncogene homolog 2,  
neuro/glioblastoma derived  
oncogene homolog (avian)

Calculated MW:

138 kDa

Observed MW:

185 kDa

Purification Method:

Protein A purification

CloneNo.:

240802C2

## Applications

Tested Applications:

WB, IHC, IF/ICC, ELISA

Species Specificity:

human, mouse

## Background Information

HER2, also known as ErbB2 and Neu, is a 185-kDa transmembrane glycoprotein member of the epidermal growth factor (EGF) receptor family of receptor tyrosine kinases. It has no ligand-binding domain and therefore cannot bind growth factors. However, it does bind tightly to other ligand-bound EGF receptor family members to form a heterodimer, stabilizing ligand binding and enhancing kinase-mediated activation of downstream signaling pathways, such as those involving mitogen-activated protein kinase and phosphatidylinositol-3 kinase. Amplification and overexpression of HER2 have been reported in numerous cancers, including breast and ovarian tumors. HER2 is a therapeutic target for the treatment of breast cancer and other carcinomas.

## Storage

Storage:

Store at -80°C.

**The product is shipped with ice packs. Upon receipt, store it immediately at -80°C**

Storage Buffer:

PBS Only

For technical support and original validation data for this product please contact:

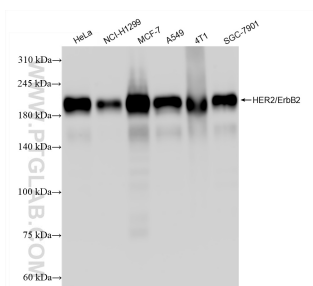
T: 4006900926

E: [Proteintech-CN@ptglab.com](mailto:Proteintech-CN@ptglab.com)

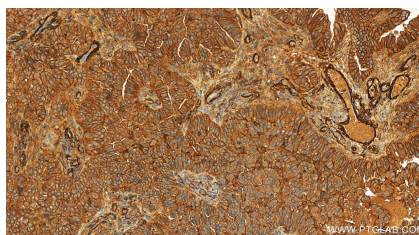
W: [ptgcn.com](http://ptgcn.com)

**This product is exclusively available under Proteintech Group brand and is not available to purchase from any other manufacturer.**

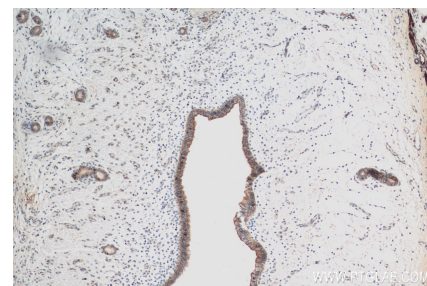
## Selected Validation Data



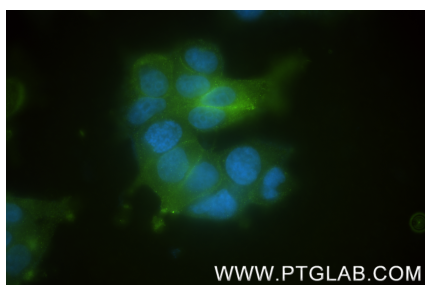
Various lysates were subjected to SDS PAGE followed by western blot with 84046-1-RR (ERBB2,p185-Specific antibody) at dilution of 1:5000 incubated at room temperature for 1.5 hours. This data was developed using the same antibody clone with 84046-1-PBS in a different storage buffer formulation.



Immunohistochemical analysis of paraffin-embedded human ovarian cancer slide using 84046-1-RR (HER2/ErBB2,p185-Specific antibody) at dilution of 1:200 (under 20x lens). Heat mediated antigen retrieval with Tris-EDTA buffer (pH 9.0). This data was developed using the same antibody clone with 84046-1-PBS in a different storage buffer formulation.



Immunohistochemical analysis of paraffin-embedded mouse uterus tissue slide using 84046-1-RR (HER2/ErBB2,p185-Specific antibody) at dilution of 1:200 (under 10x lens). Heat mediated antigen retrieval with Tris-EDTA buffer (pH 9.0). This data was developed using the same antibody clone with 84046-1-PBS in a different storage buffer formulation.



Immunofluorescent analysis of (4% PFA) fixed MCF-7 cells using HER2/ErBB2,p185-Specific antibody (84046-1-RR, Clone: 240802C2) at dilution of 1:500 and Coralite®488-Conjugated Goat Anti-Rabbit IgG(H+L) (SA00013-2). This data was developed using the same antibody clone with 84046-1-PBS in a different storage buffer formulation.