

For Research Use Only

PARP14 Recombinant antibody, PBS Only (Detector)

Catalog Number: 84039-1-PBS



Basic Information

Catalog Number:

84039-1-PBS

Concentration:

1 mg/ml

Source:

Rabbit

Isotype:

IgG

Immunogen Catalog Number:

AG35007

GenBank Accession Number:

NM_017554

GeneID (NCBI):

54625

UNIPROT ID:

Q460N5

Full Name:

poly (ADP-ribose) polymerase family, member 14

Calculated MW:

203kd

Purification Method:

Protein A purification

CloneNo.:

241078B2

Applications

Tested Applications:

Cytometric bead array, Sandwich ELISA, Indirect ELISA, Sample test

Species Specificity:

human

Background Information

Storage

Storage:

Store at -80°C.

The product is shipped with ice packs. Upon receipt, store it immediately at -80°C

Storage Buffer:

PBS Only

For technical support and original validation data for this product please contact:

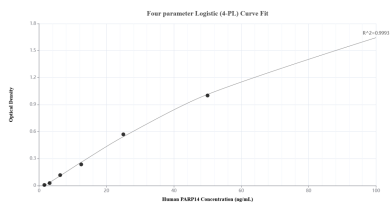
T: 4006900926

E: Proteintech-CN@ptglab.com

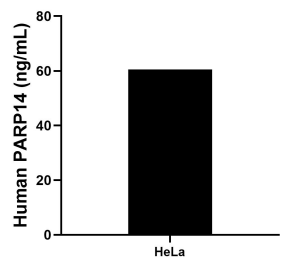
W: ptgcn.com

This product is exclusively available under Proteintech Group brand and is not available to purchase from any other manufacturer.

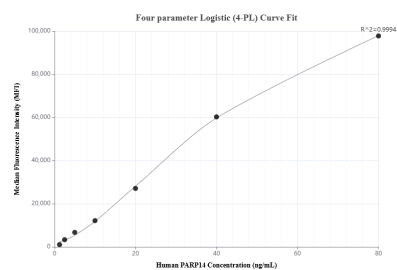
Selected Validation Data



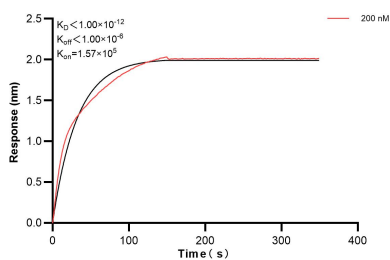
Sandwich ELISA standard curve of MP00966-3, Human PARP14 Recombinant Matched Antibody Pair - PBS only. 84039-5-PBS was coated to a plate as the capture antibody and incubated with serial dilutions of standard Ag35007. 84039-1-PBS was HRP conjugated as the detection antibody. Range: 1.56-100 ng/mL.



The mean PARP14 concentration was determined to be 60.54 ng/mL in HeLa cell extract based on a 1.00 mg/mL extract load.



Cytometric bead array standard curve of MP00966-2, PARP14 Recombinant Matched Antibody Pair, PBS Only. Capture antibody: 84039-3-PBS. Detection antibody: 84039-1-PBS. Standard: Ag35007. Range: 1.25-80 ng/mL.



Bi-layer interferometry (BLI) kinetic assay of 84039-1-PBS against Human PARP14 was performed. The affinity constant is below 1 pM.