

For Research Use Only

ATOH1 Recombinant antibody, PBS Only (Detector)

Catalog Number: 84037-2-PBS



Basic Information

Catalog Number: 84037-2-PBS	GenBank Accession Number: BC069594	Purification Method: Protein A purification
Concentration: 1 mg/ml	GeneID (NCBI): 474	CloneNo.: 240593C7
Source: Rabbit	UNIPROT ID: Q92858	
Isotype: IgG	Full Name: atonal homolog 1 (Drosophila)	
Immunogen Catalog Number: AG15615	Calculated MW: 354 aa, 38 kDa	

Applications

Tested Applications:
Cytometric bead array, Sandwich ELISA, Indirect ELISA,
Sample test

Species Specificity:
human

Background Information

Storage

Storage:
Store at -80°C.
The product is shipped with ice packs. Upon receipt, store it immediately at -80°C

Storage Buffer:
PBS Only

For technical support and original validation data for this product please contact:

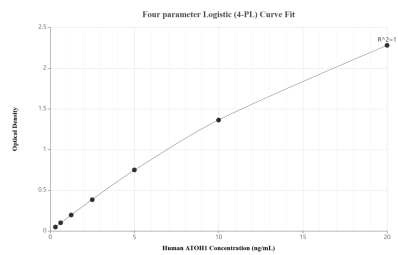
T: 4006900926

E: Proteintech-CN@ptglab.com

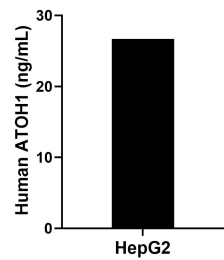
W: ptgcn.com

This product is exclusively available under Proteintech Group brand and is not available to purchase from any other manufacturer.

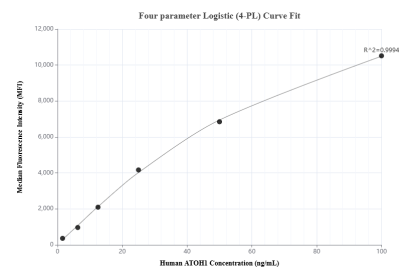
Selected Validation Data



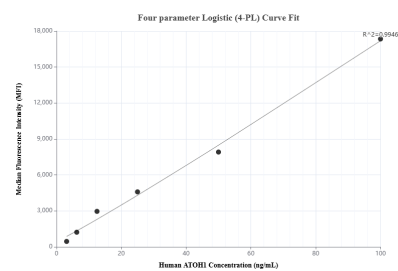
Sandwich ELISA standard curve of MP00948-3, Human ATOH1 Recombinant Matched Antibody Pair - PBS only. 84037-4-PBS was coated to a plate as the capture antibody and incubated with serial dilutions of standard Ag15615. 84037-2-PBS was HRP conjugated as the detection antibody. Range: 0.313-20 ng/mL



The mean ATOH1 concentration was determined to be 26.69 ng/mL in HepG2 cell extract based on a 1.00 mg/mL extract load.



Cytometric bead array standard curve of MP00948-1, ATOH1 Recombinant Matched Antibody Pair, PBS Only. Capture antibody: 84037-3-PBS. Detection antibody: 84037-2-PBS. Standard: Ag15615. Range: 1.563-100 ng/mL



Cytometric bead array standard curve of MP00948-2, ATOH1 Recombinant Matched Antibody Pair, PBS Only. Capture antibody: 84037-1-PBS. Detection antibody: 84037-2-PBS. Standard: Ag15615. Range: 3.125-100 ng/mL