

L1CAM Recombinant antibody

Catalog Number: 84034-4-RR

Basic Information

Catalog Number: 84034-4-RR	GenBank Accession Number: BC126229	Purification Method: Protein A purification
Size: 1000 µg/ml	GeneID (NCBI): 3897	CloneNo.: 240978F1
Source: Rabbit	UNIPROT ID: P32004	Recommended Dilutions: WB 1:500-1:2000
Isotype: IgG	Full Name: L1 cell adhesion molecule	
	Calculated MW: 1257 aa, 140 kDa	
	Observed MW: 245 kDa	

Applications

Tested Applications: WB, ELISA	Positive Controls: WB : A549 cells,
Species Specificity: human	

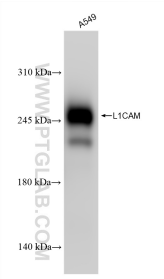
Background Information

L1CAM, also known as NCAM-L1 or CD171, is a cell adhesion molecule of the immunoglobulin superfamily. It is a 200-220 kDa transmembrane glycoprotein composed of six Ig-like domains and five fibronectin type III repeats followed by a transmembrane region and a highly conserved cytoplasmic tail (PMID: 3412448; 22796939). L1CAM is primarily expressed in the nervous system and is involved in neuron-neuron adhesion, neurite fasciculation, outgrowth of neurites, cerebellar granule cell migration, neurite outgrowth on Schwann cells and interactions among epithelial cells of intestinal crypts (PMID: 3412448; 10767310). L1CAM is overexpressed in many human cancers and is often associated with bad prognosis (PMID: 27267927; 26111503).

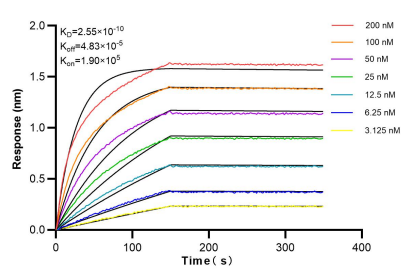
Storage

Storage:
Store at -20°C. Stable for one year after shipment.
Storage Buffer:
PBS with 0.02% sodium azide and 50% glycerol pH 7.3.
Aliquoting is unnecessary for -20°C storage

Selected Validation Data



A549 cells were subjected to SDS PAGE followed by western blot with 84034-4-RR (L1CAM antibody) at dilution of 1:1000 incubated at room temperature for 1.5 hours.



Biolayer interferometry (BLI) kinetic assays of 84034-4-RR against Human L1CAM were performed. The affinity constant is 0.255 nM.