

For Research Use Only

ACSF2 Recombinant antibody, PBS Only (Capture/Detector)

Catalog Number: 84033-2-PBS



Basic Information

Catalog Number:

84033-2-PBS

Concentration:

1 mg/ml

Source:

Rabbit

Isotype:

IgG

Immunogen Catalog Number:

AG9199

GenBank Accession Number:

BC012053

GeneID (NCBI):

80221

UNIPROT ID:

Q96CM8

Full Name:

acyl-CoA synthetase family member

2

Calculated MW:

615 aa, 68 kDa

Purification Method:

Protein A purification

CloneNo.:

241208C3

Applications

Tested Applications:

IHC, IF/ICC, Cytometric bead array, Indirect ELISA

Species Specificity:

human, mouse

Background Information

Storage

Storage:

Store at -80°C.

The product is shipped with ice packs. Upon receipt, store it immediately at -80°C

Storage Buffer:

PBS Only

For technical support and original validation data for this product please contact:

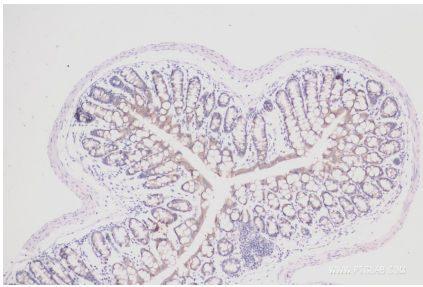
T: 4006900926

E: Proteintech-CN@ptglab.com

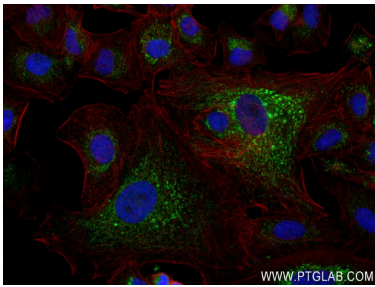
W: ptgcn.com

This product is exclusively available under Proteintech Group brand and is not available to purchase from any other manufacturer.

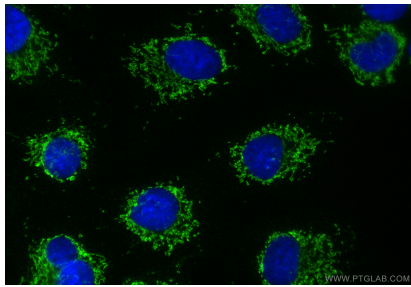
Selected Validation Data



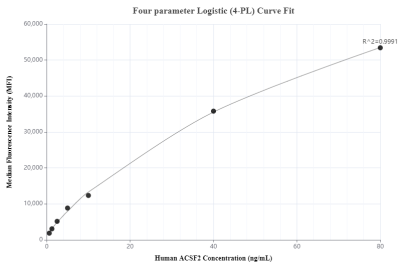
Immunohistochemical analysis of paraffin-embedded mouse colon tissue slide using 84033-2-RR (ACSF2 antibody) at dilution of 1:500 (under 10x lens). Heat mediated antigen retrieval with Tris-EDTA buffer (pH 9.0). This data was developed using the same antibody clone with 84033-2-PBS in a different storage buffer formulation.



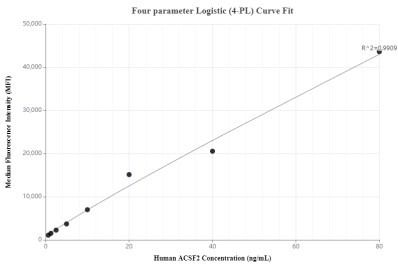
Immunofluorescent analysis of (4% PFA) fixed A549 cells using ACSF2 antibody (84033-2-RR, Clone: 241208C3) at dilution of 1:400 and CoraLite®488-Conjugated AffiniPure Goat Anti-Rabbit IgG(H+L) (SA00013-2), CL594-Phalloidin (red). This data was developed using the same antibody clone with 84033-2-PBS in a different storage buffer formulation.



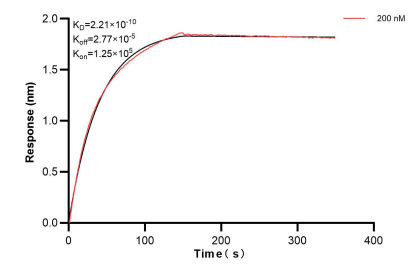
Immunofluorescent analysis of (4% PFA) fixed A549 cells using ACSF2 antibody (84033-2-RR, Clone: 241208C3) at dilution of 1:500 and CoraLite®488-Conjugated Goat Anti-Rabbit IgG(H+L) (SA00013-2). This data was developed using the same antibody clone with 84033-2-PBS in a different storage buffer formulation.



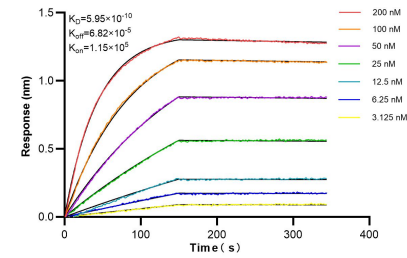
Cytometric bead array standard curve of MP00952-1, ACSF2 Recombinant Matched Antibody Pair, PBS Only. Capture antibody: 84033-2-PBS. Detection antibody: 84033-3-PBS. Standard: Ag9199. Range: 0.625-80 ng/mL



Cytometric bead array standard curve of MP00952-2, ACSF2 Recombinant Matched Antibody Pair, PBS Only. Capture antibody: 84033-1-PBS. Detection antibody: 84033-2-PBS. Standard: Ag9199. Range: 0.625-80 ng/mL



Bilayer interferometry (BLI) kinetic assay of 84033-2-PBS against Human ACSF2 was performed. The affinity constant is 0.221 nM.



Bilayer interferometry (BLI) kinetic assays of 84033-2-RR against Human ACSF2 were performed. The affinity constant is 0.595 nM.