

For Research Use Only

TGM1 Recombinant antibody, PBS Only (Capture)

Catalog Number: 84032-2-PBS



Basic Information

Catalog Number:

84032-2-PBS

Size:

1 mg/ml

Source:

Rabbit

Isotype:

IgG

Immunogen Catalog Number:

AG17969

GenBank Accession Number:

BC034699

GeneID (NCBI):

7051

UNIPROT ID:

P22735

Full Name:

transglutaminase 1 (K polypeptide
epidermal type I, protein-glutamine-
gamma-glutamyltransferase)

Calculated MW:

817 aa, 90 kDa

Observed MW:

90 kDa

Purification Method:

Protein A purification

CloneNo.:

241218E12

Applications

Tested Applications:

WB, IHC, Cytometric bead array, Indirect ELISA

Species Specificity:

human, rat

Background Information

Storage

Storage:

Store at -80°C.

The product is shipped with ice packs. Upon receipt, store it immediately at -80°C

Storage Buffer:

PBS Only

For technical support and original validation data for this product please contact:

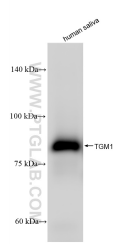
T: 4006900926

E: Proteintech-CN@ptglab.com

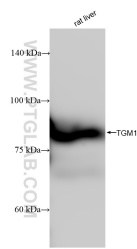
W: ptgcn.com

This product is exclusively available under Proteintech Group brand and is not available to purchase from any other manufacturer.

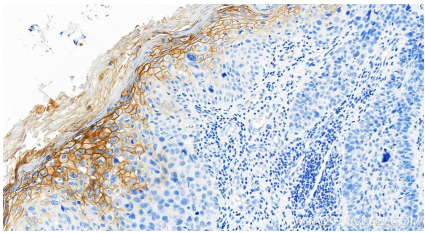
Selected Validation Data



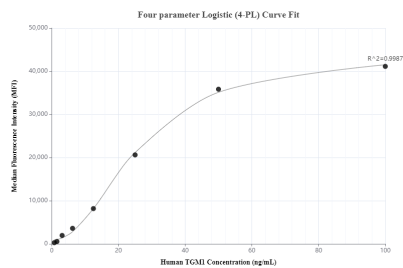
Various lysates were subjected to SDS PAGE followed by western blot with 84032-2-RR (TGM1 antibody) at dilution of 1:10000 incubated at room temperature for 1.5 hours. This data was developed using the same antibody clone with 84032-2-PBS in a different storage buffer formulation.



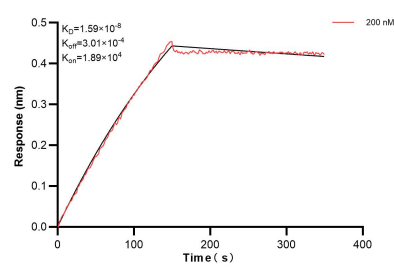
Various lysates were subjected to SDS PAGE followed by western blot with 84032-2-RR (TGM1 antibody) at dilution of 1:10000 incubated at room temperature for 1.5 hours. This data was developed using the same antibody clone with 84032-2-PBS in a different storage buffer formulation.



Immunohistochemical analysis of paraffin-embedded human Bowen disease slide using 84032-2-RR (TGM1 antibody) at dilution of 1:1000 (under 20x lens). Heat mediated antigen retrieval with Tris-EDTA buffer (pH 9.0). This data was developed using the same antibody clone with 84032-2-PBS in a different storage buffer formulation.



Cytometric bead array standard curve of MP00951-1, TGM1 Recombinant Matched Antibody Pair, PBS Only. Capture antibody: 84032-2-PBS. Detection antibody: 84032-1-PBS. Standard: Ag17969. Range: 0.781-100 ng/mL.



Biolayer interferometry (BLI) kinetic assay of 84032-2-PBS against Human TGM1 was performed. The affinity constant is 15.9 nM.