

For Research Use Only

Siglec-8 Recombinant antibody, PBS Only (Capture/Detector)

Catalog Number: 84026-1-PBS



Basic Information

Catalog Number:

84026-1-PBS

Size:

1 mg/ml

Source:

Rabbit

Isotype:

IgG

GenBank Accession Number:

BC053319

GeneID (NCBI):

27181

UNIPROT ID:

Q9NYZ4

Full Name:

sialic acid binding Ig-like lectin 8

Calculated MW:

499 aa, 54 kDa

Purification Method:

Protein A purification

CloneNo.:

241275D7

Applications

Tested Applications:

Cytometric bead array, Sandwich ELISA, Indirect ELISA, Sample test

Species Specificity:

human

Background Information

Storage

Storage:

Store at -80°C.

The product is shipped with ice packs. Upon receipt, store it immediately at -80°C

Storage Buffer:

PBS Only

For technical support and original validation data for this product please contact:

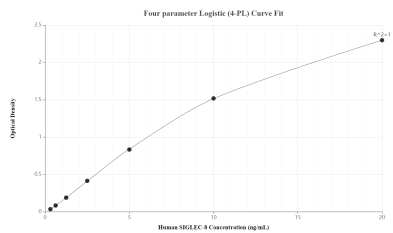
T: 4006900926

E: Proteintech-CN@ptglab.com

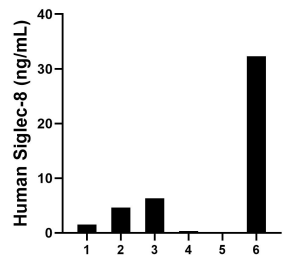
W: ptgcn.com

This product is exclusively available under Proteintech Group brand and is not available to purchase from any other manufacturer.

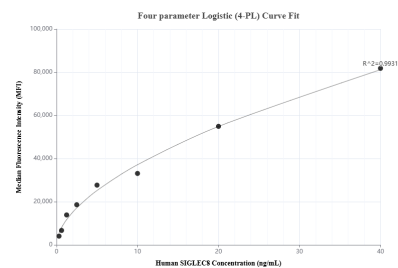
Selected Validation Data



Sandwich ELISA standard curve of MP00960-4, Human Siglec-8 Recombinant Matched Antibody Pair - PBS only. 84026-2-PBS was coated to a plate as the capture antibody and incubated with serial dilutions of standard RP02311. 84026-1-PBS was HRP conjugated as the detection antibody. Range: 0.313-20 ng/mL.



Serum of six individual healthy human donors was measured. The Siglec-8 concentration of detected samples was determined to be 7.56 ng/mL with a range of 0.19-32.32 ng/mL.



Cytometric bead array standard curve of MP00960-2, SIGLEC8 Recombinant Matched Antibody Pair, PBS Only. Capture antibody: 84026-1-PBS. Detection antibody: 84026-4-PBS. Standard: RP02311. Range: 0.313-40 ng/mL.