

For Research Use Only

# NFKB2,p100 Recombinant antibody, PBS Only (Capture/Detector)

Catalog Number:84022-4-PBS



## Basic Information

Catalog Number:

84022-4-PBS

Concentration:

1000 µg/ml

Source:

Rabbit

Isotype:

IgG

Immunogen Catalog Number:

AG0662

GenBank Accession Number:

BC002844

GeneID (NCBI):

4791

ENSEMBL Gene ID:

ENSG00000077150

UNIPROT ID:

Q00653

Full Name:

nuclear factor of kappa light  
polypeptide gene enhancer in B-cells  
2 (p49/p100)

Calculated MW:

97 kDa

Purification Method:

Protein A purification

CloneNo.:

241126F8

## Applications

Tested Applications:

Cytometric bead array, Sandwich ELISA, Indirect ELISA,  
Sample test

Species Specificity:

human

## Background Information

### Storage

Storage:

Store at -80°C.

**The product is shipped with ice packs. Upon receipt, store it immediately at -80°C**

Storage Buffer:

PBS Only

For technical support and original validation data for this product please contact:

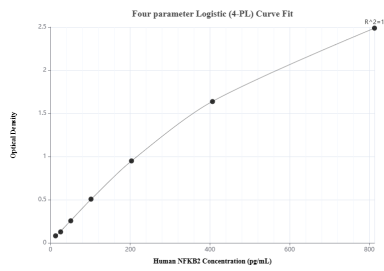
T: 4006900926

E: [Proteintech-CN@ptglab.com](mailto:Proteintech-CN@ptglab.com)

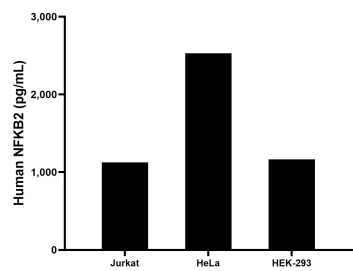
W: [ptgcn.com](http://ptgcn.com)

**This product is exclusively available under Proteintech Group brand and is not available to purchase from any other manufacturer.**

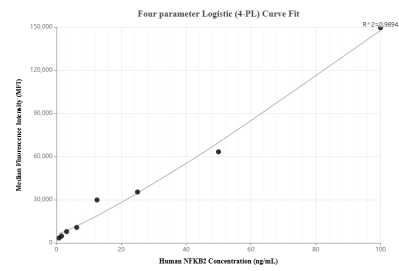
# Selected Validation Data



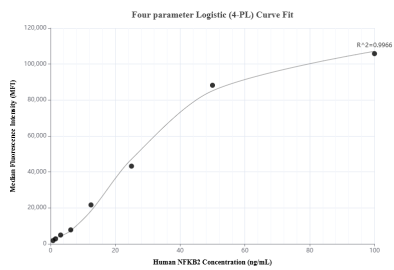
Sandwich ELISA standard curve of MP00950-1, Human NFKB2 Recombinant Matched Antibody Pair - PBS only. 84022-4-PBS was coated to a plate as the capture antibody and incubated with serial dilutions of standard Ag0662. 84022-2-PBS was HRP conjugated as the detection antibody. Range: 12.7-813 pg/mL



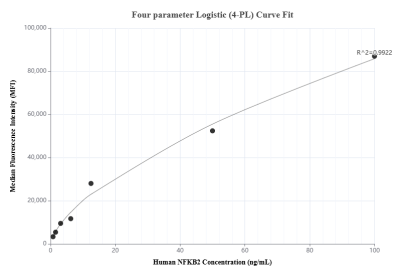
The mean NFKB2 concentration was determined to be 1,125.5 pg/mL in Jurkat cell extract based on a 2.3 mg/mL extract load, 2,530.2 pg/mL in HeLa cell extract based on a 1.5 mg/mL extract load and 1,165.1 pg/mL in HEK-293 cell extract based on a 2.0 mg/mL extract load.



Cytometric bead array standard curve of MP00950-1, NFKB2 Recombinant Matched Antibody Pair, PBS Only. Capture antibody: 84022-4-PBS. Detection antibody: 84022-2-PBS. Standard: Ag0662. Range: 0.781-100 ng/mL



Cytometric bead array standard curve of MP00950-2, NFKB2 Recombinant Matched Antibody Pair, PBS Only. Capture antibody: 84022-3-PBS. Detection antibody: 84022-4-PBS. Standard: Ag0662. Range: 0.781-100 ng/mL



Cytometric bead array standard curve of MP00950-3, NFKB2 Recombinant Matched Antibody Pair, PBS Only. Capture antibody: 84022-1-PBS. Detection antibody: 84022-4-PBS. Standard: Ag0662. Range: Ag0662.