

# SRP54 Recombinant monoclonal antibody

Catalog Number: 84014-6-RR

## Basic Information

<b>Catalog Number:</b> 84014-6-RR	<b>GenBank Accession Number:</b> BC003389	<b>Purification Method:</b> Protein A purification
<b>Source:</b> Rabbit	<b>GeneID (NCBI):</b> 6729	<b>CloneNo.:</b> 241125G1
<b>Isotype:</b> IgG	<b>UNIPROT ID:</b> P61011	<b>Recommended Dilutions:</b> WB: 1:2000-1:10000 IHC: 1:250-1:1000 IF/ICC: 1:200-1:800
<b>Immunogen Catalog Number:</b> AG2327	<b>Full Name:</b> signal recognition particle 54kDa	
	<b>Calculated MW:</b> 54 kDa	
	<b>Observed MW:</b> 54 kDa	

## Applications

**Tested Applications:**  
WB, IHC, IF/ICC, ELISA

**Species Specificity:**  
human, mouse

**Note-IHC:** suggested antigen retrieval with **TE buffer pH 9.0; (\*)** Alternatively, antigen retrieval may be performed with **citrate buffer pH 6.0**

**Positive Controls:**

**WB :** HeLa cells, RAW 264.7 cells, HEK-293 cells, MCF-7 cells, Jurkat cells, NIH/3T3 cells

**IHC :** human placenta tissue,

**IF/ICC :** HepG2 cells,

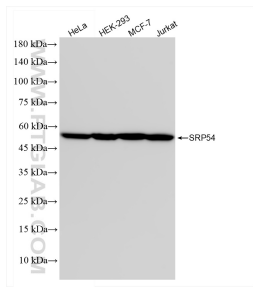
## Background Information

The signal recognition particle (SRP) is a ribonucleoprotein complex that mediates the targeting of proteins to the endoplasmic reticulum (ER). The complex consists of a 7S (or 7SL) RNA and 6 different proteins, and signal recognition particle 54 (SRP54) is one of them. SRP54 binds to the signal sequence of presecretory protein as they emerge from the translating ribosomes, and then transfers them to translocating chain-associating membrane protein (TRAM).

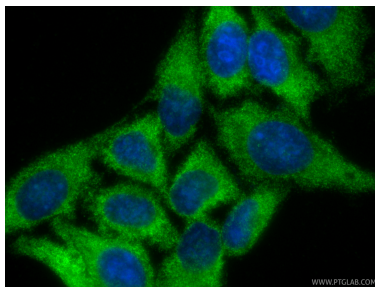
## Storage

**Storage:**  
Store at -20°C. Stable for one year after shipment.  
**Storage Buffer:**  
PBS with 0.02% sodium azide and 50% glycerol, pH7.3  
**Aliquoting is unnecessary for -20°C storage**

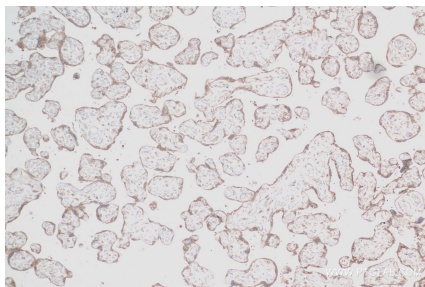
## Selected Validation Data



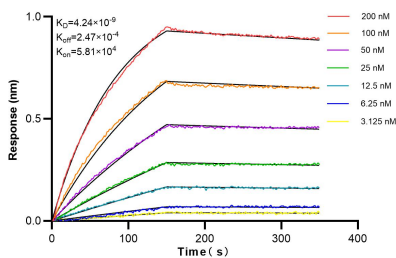
Various lysates were subjected to SDS PAGE followed by western blot with 84014-6-RR (SRP54 antibody) at dilution of 1:5000 incubated at room temperature for 1.5 hours.



Immunofluorescent analysis of (-20°C Ethanol) fixed HepG2 cells using SRP54 antibody (84014-6-RR, Clone: 241125G1) at dilution of 1:400 and CoraLite®488-Conjugated Goat Anti-Rabbit IgG(H+L) (SA00013-2).



Immunohistochemical analysis of paraffin-embedded human placenta tissue slide using 84014-6-RR (SRP54 antibody) at dilution of 1:500 (under 10x lens). Heat mediated antigen retrieval with Tris-EDTA buffer (pH 9.0).



Biolayer interferometry (BLI) kinetic assays of 84014-6-RR against Human SRP54 were performed. The affinity constant is 4.24 nM.