

For Research Use Only

# SRP54 Recombinant antibody, PBS Only (Detector)

Catalog Number: 84014-5-PBS

Featured Product



## Basic Information

Catalog Number:

84014-5-PBS

Concentration:

1 mg/ml

Source:

Rabbit

Isotype:

IgG

Immunogen Catalog Number:

AG2327

GenBank Accession Number:

BC003389

GeneID (NCBI):

6729

UNIPROT ID:

P61011

Full Name:

signal recognition particle 54kDa

Calculated MW:

54 kDa

Observed MW:

54 kDa

Purification Method:

Protein A purification

CloneNo.:

241125D6

## Applications

Tested Applications:

WB, IF/ICC, FC (Intra), Sandwich ELISA, Indirect ELISA, Sample test

Species Specificity:

human, mouse

## Background Information

The signal recognition particle (SRP) is a ribonucleoprotein complex that mediates the targeting of proteins to the endoplasmic reticulum (ER). The complex consists of a 7S (or 7SL) RNA and 6 different proteins, and signal recognition particle 54 (SRP54) is one of them. SRP54 binds to the signal sequence of presecretory protein as they emerge from the translating ribosomes, and then transfers them to translocating chain-associating membrane protein (TRAM).

## Storage

Storage:

Store at -80°C.

The product is shipped with ice packs. Upon receipt, store it immediately at -80°C

Storage Buffer:

PBS only, pH7.3

For technical support and original validation data for this product please contact:

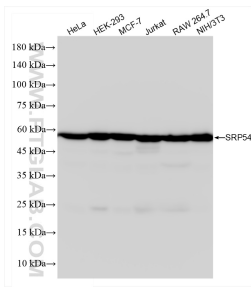
T: 4006900926

E: [Proteintech-CN@ptglab.com](mailto:Proteintech-CN@ptglab.com)

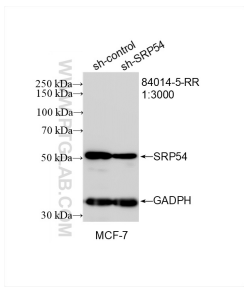
W: [ptgcn.com](http://ptgcn.com)

This product is exclusively available under Proteintech Group brand and is not available to purchase from any other manufacturer.

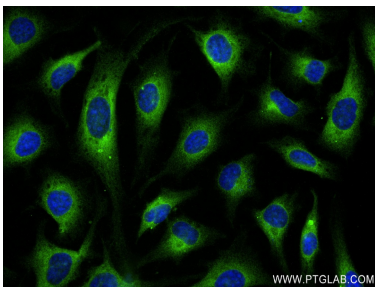
Selected Validation Data



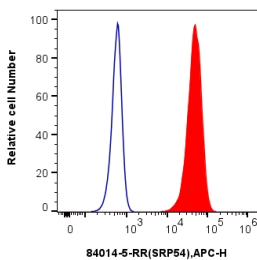
Various lysates were subjected to SDS PAGE followed by western blot with 84014-5-RR (SRP54 antibody) at dilution of 1:6000 incubated at room temperature for 1.5 hours. This data was developed using the same antibody clone with 84014-5-PBS in a different storage buffer formulation.



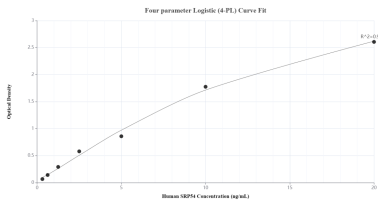
WB result of SRP54 antibody (84014-5-RR; 1:3000; incubated at room temperature for 1.5 hours) with sh-Control and sh-SRP54 transfected MCF-7 cells. This data was developed using the same antibody clone with 84014-5-PBS in a different storage buffer formulation.



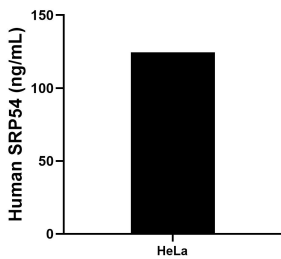
Immunofluorescent analysis of (-20°C Ethanol) fixed HeLa cells using SRP54 antibody (84014-5-RR, Clone: 241125D6 ) at dilution of 1:150 and CoraLite®488-Conjugated AffiniPure Goat Anti-Rabbit IgG(H+L) (SA00013-2). This data was developed using the same antibody clone with 84014-5-PBS in a different storage buffer formulation.



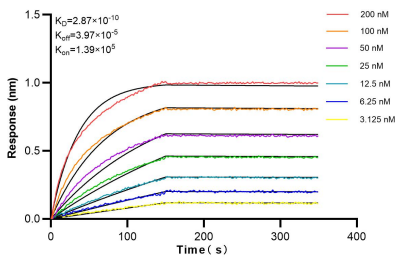
1x10<sup>6</sup> HepG2 cells were intracellularly stained with 0.25 ug Srp54 Recombinant Antibody (84014-5-RR, Clone:241125D6) and APC-Conjugated Goat Anti-Rabbit IgG(H+L)(red), or 0.25 ug Isotype Control (blue). Cells were fixed with 4% PFA and permeabilized with Flow Cytometry Perm Buffer (PF00011-C). This data was developed using the same antibody clone with 84014-5-PBS in a different storage buffer formulation.



Sandwich ELISA standard curve of MP00955-4, Human SRP54 Recombinant Matched Antibody Pair - PBS only. 84014-2-PBS was coated to a plate as the capture antibody and incubated with serial dilutions of standard Ag2327. 84014-5-PBS was HRP conjugated as the detection antibody. Range: 0.313-20 ng/mL.



The mean SRP54 concentration was determined to be 124.39 ng/mL in HeLa cell extract based on a 1.20 mg/mL extract load.



Biolayer interferometry (BLI) kinetic assays of 84014-5-RR against Human SRP54 were performed. The affinity constant is 0.287 nM.