

For Research Use Only

KIF5A Recombinant antibody, PBS Only (Detector)

Catalog Number: 84013-6-PBS



Basic Information

Catalog Number:

84013-6-PBS

Concentration:

1 mg/ml

Source:

Rabbit

Isotype:

IgG

Immunogen Catalog Number:

AG15518

GenBank Accession Number:

BC146670

GeneID (NCBI):

3798

UNIPROT ID:

Q12840

Full Name:

kinesin family member 5A

Calculated MW:

1032 aa, 117 kDa

Purification Method:

Protein A purification

CloneNo.:

241124G5

Applications

Tested Applications:

Sandwich ELISA, Indirect ELISA, Sample test

Species Specificity:

human

Background Information

Storage

Storage:

Store at -80°C.

The product is shipped with ice packs. Upon receipt, store it immediately at -80°C

Storage Buffer:

PBS only, pH7.3

For technical support and original validation data for this product please contact:

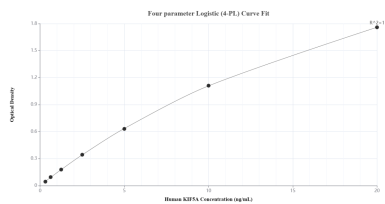
T: 4006900926

E: Proteintech-CN@ptglab.com

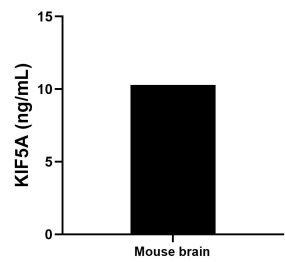
W: ptgcn.com

This product is exclusively available under Proteintech Group brand and is not available to purchase from any other manufacturer.

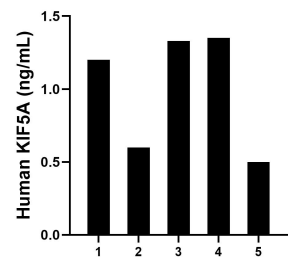
Selected Validation Data



Sandwich ELISA standard curve of MP00967-4, Human KIF5A Recombinant Matched Antibody Pair - PBS only. 84013-3-PBS was coated to a plate as the capture antibody and incubated with serial dilutions of standard Ag15518. 84013-6-PBS was HRP conjugated as the detection antibody. Range: 0.313-20 ng/mL.



The mean KIF5A concentration was determined to be 10.30 ng/mL in mouse brain tissue extract based on a 4.60 mg/mL extract load.



Serum of five individual healthy human donors was measured. The KIF5A concentration of detected samples was determined to be 1.00 ng/mL with a range of 0.50 - 1.35 ng/mL.