

For Research Use Only

# KIF5A Recombinant antibody

Catalog Number: 84013-5-RR



## Basic Information

Catalog Number:

84013-5-RR

Concentration:

400 ug/ml

Source:

Rabbit

Isotype:

IgG

Immunogen Catalog Number:

AG15518

GenBank Accession Number:

BC146670

GeneID (NCBI):

3798

UNIPROT ID:

Q12840

Full Name:

kinesin family member 5A

Calculated MW:

1032 aa, 117 kDa

Observed MW:

118-120 kDa

Purification Method:

Protein A purification

CloneNo.:

241124H5

Recommended Dilutions:

WB 1:1000-1:8000

IHC 1:50-1:500

## Applications

Tested Applications:

WB, IHC, FC (Intra), ELISA

Species Specificity:

human

**Note-IHC: suggested antigen retrieval with TE buffer pH 9.0; (\*) Alternatively, antigen retrieval may be performed with citrate buffer pH 6.0**

Positive Controls:

WB : SH-SY5Y cells, U-87-MG cells, mouse brain tissue, rat brain tissue

IHC : mouse brain tissue,

## Background Information

Kinesin superfamily proteins (KIFs) are microtubule-based molecular motors essential for the intracellular transport of various cargos, including organelles, proteins, and RNAs. KIF 5A is expressed exclusively in neurons and transports neuronal cargoes into axons and dendrites. KIF5A mutations have been associated with Charcot-Marie-Tooth Type 2, an axonal peripheral neuropathy characterized by progressive loss of peripheral sensation and muscle wasting.

## Storage

Storage:

Store at -20°C. Stable for one year after shipment.

Storage Buffer:

PBS with 0.02% sodium azide and 50% glycerol, pH7.3

Aliquoting is unnecessary for -20°C storage

For technical support and original validation data for this product please contact:

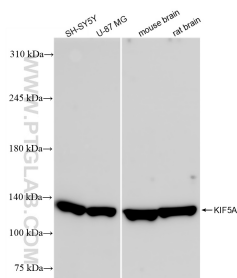
T: 4006900926

E: [Proteintech-CN@ptglab.com](mailto:Proteintech-CN@ptglab.com)

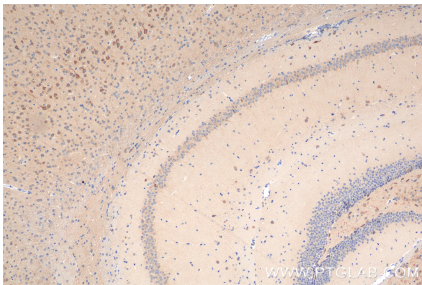
W: [ptgcn.com](http://ptgcn.com)

This product is exclusively available under Proteintech Group brand and is not available to purchase from any other manufacturer.

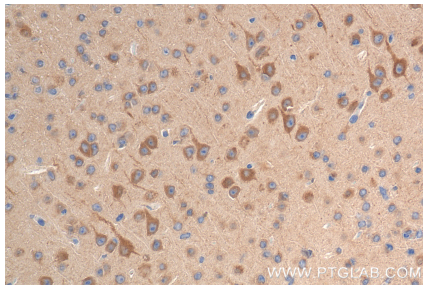
## Selected Validation Data



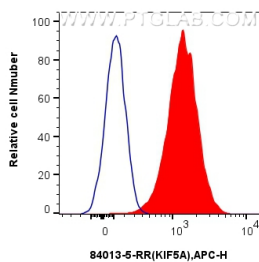
SH-SY5Y cells were subjected to SDS PAGE followed by western blot with 84013-5-RR (KIF5A antibody) at dilution of 1:4000 incubated at room temperature for 1.5 hours.



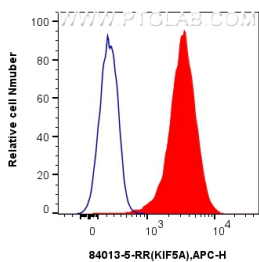
Immunohistochemical analysis of paraffin-embedded mouse brain tissue slide using 84013-5-RR (KIF5A antibody) at dilution of 1:100 (under 10x lens). Heat mediated antigen retrieval with Tris-EDTA buffer (pH 9.0).



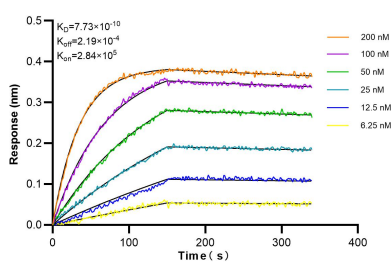
Immunohistochemical analysis of paraffin-embedded mouse brain tissue slide using 84013-5-RR (KIF5A antibody) at dilution of 1:100 (under 40x lens). Heat mediated antigen retrieval with Tris-EDTA buffer (pH 9.0).



1x10<sup>6</sup> SH-SY5Y cells were intracellularly stained with 0.25 ug KIF5A Recombinant antibody (84013-5-RR, Clone:241124H5) and APC-Conjugated Goat Anti-Rabbit IgG(H+L)(red), or 0.25 ug Isotype Control (blue). Cells were fixed with 4% PFA and permeabilized with Flow Cytometry Perm Buffer (PF00011-C).



1x10<sup>6</sup> K562 were intracellularly stained with 0.25 ug KIF5A Recombinant antibody (84013-5-RR, Clone:241124H5) and APC-Conjugated Goat Anti-Rabbit IgG(H+L)(red), or 0.25 ug Isotype Control (blue). Cells were fixed with 4% PFA and permeabilized with Flow Cytometry Perm Buffer (PF00011-C).



Biolayer interferometry (BLI) kinetic assays of 84013-5-RR against Human KIF5A were performed. The affinity constant is 0.773 nM.