

For Research Use Only

KIF5A Recombinant antibody

Catalog Number: 84013-4-RR



Basic Information

Catalog Number: 84013-4-RR	GenBank Accession Number: BC146670	Purification Method: Protein A purification
Concentration: 1000 µg/ml	GeneID (NCBI): 3798	CloneNo.: 241124H1
Source: Rabbit	UNIPROT ID: Q12840	Recommended Dilutions: WB 1:5000-1:50000 IHC 1:125-1:500 IF/ICC 1:125-1:500
Isotype: IgG	Full Name: kinesin family member 5A	
Immunogen Catalog Number: AG15518	Calculated MW: 1032 aa, 117 kDa Observed MW: 118-120 kDa	

Applications

Tested Applications: WB, IHC, IF/ICC, FC (Intra), ELISA	Positive Controls: WB : rat brain tissue, U-87-MG cells, mouse brain tissue IHC : mouse brain tissue, IF/ICC : PC-12 cells,
Species Specificity: human, mouse, rat	
Note-IHC: suggested antigen retrieval with TE buffer pH 9.0; (*) Alternatively, antigen retrieval may be performed with citrate buffer pH 6.0	

Background Information

Kinesin superfamily proteins (KIFs) are microtubule-based molecular motors essential for the intracellular transport of various cargos, including organelles, proteins, and RNAs. KIF 5A is expressed exclusively in neurons and transports neuronal cargoes into axons and dendrites. KIF5A mutations have been associated with Charcot-Marie-Tooth Type 2, an axonal peripheral neuropathy characterized by progressive loss of peripheral sensation and muscle wasting.

Storage

Storage:
Store at -20°C. Stable for one year after shipment.
Storage Buffer:
PBS with 0.02% sodium azide and 50% glycerol, pH7.3
Aliquoting is unnecessary for -20°C storage

For technical support and original validation data for this product please contact:

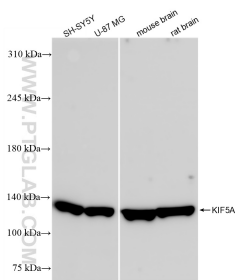
T: 4006900926

E: Proteintech-CN@ptglab.com

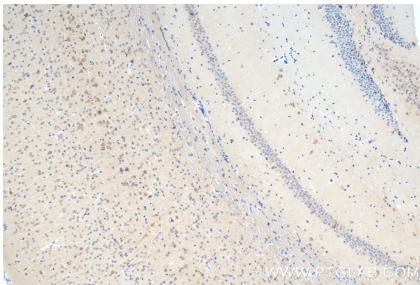
W: ptgcn.com

This product is exclusively available under Proteintech Group brand and is not available to purchase from any other manufacturer.

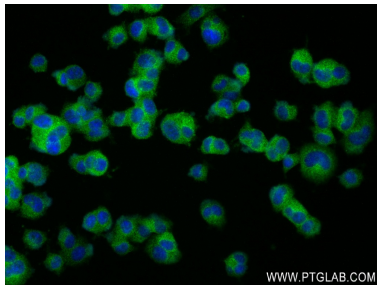
Selected Validation Data



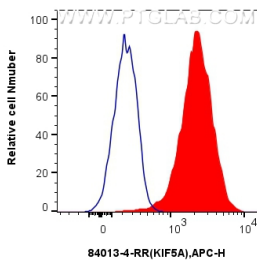
rat brain tissue were subjected to SDS PAGE followed by western blot with 84013-4-RR (KIF5A antibody) at dilution of 1:10000 incubated at room temperature for 1.5 hours.



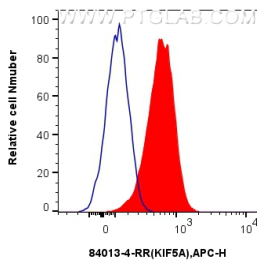
Immunohistochemical analysis of paraffin-embedded mouse brain tissue slide using 84013-4-RR (KIF5A antibody) at dilution of 1:250 (under 10x lens). Heat mediated antigen retrieval with Tris-EDTA buffer (pH 9.0).



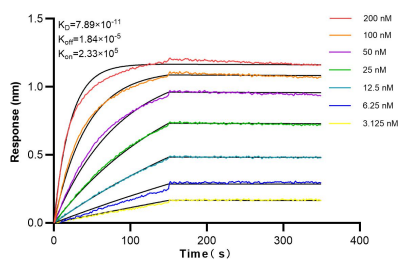
Immunofluorescent analysis of (4% PFA) fixed PC-12 cells using KIF5A antibody (84013-4-RR, Clone: 241124H1) at dilution of 1:250 and CoraLite®488-Conjugated Goat Anti-Rabbit IgG(H+L) (SA00013-2).



1x10⁶ K-562 cells were intracellularly stained with 0.25 ug KIF5A Recombinant antibody (84013-4-RR, Clone:241124H1) and APC-Conjugated Goat Anti-Rabbit IgG(H+L)(red), or 0.25 ug Isotype Control (blue). Cells were fixed with 4% PFA and permeabilized with Flow Cytometry Perm Buffer (PF00011-C).



1x10⁶ SH-SY5Y cells were intracellularly stained with 0.25 ug KIF5A Recombinant antibody (84013-4-RR, Clone:241124H1) and APC-Conjugated Goat Anti-Rabbit IgG(H+L)(red), or 0.25 ug Isotype Control (blue). Cells were fixed with 4% PFA and permeabilized with Flow Cytometry Perm Buffer (PF00011-C).



Biolayer interferometry (BLI) kinetic assays of 84013-4-RR against Human KIF5A were performed. The affinity constant is 78.9 pM.