

For Research Use Only

# ABR Recombinant antibody

Catalog Number: 84011-6-RR



## Basic Information

Catalog Number:

84011-6-RR

Size:

1000 ug/ml

Source:

Rabbit

Isotype:

IgG

Immunogen Catalog Number:

AG29522

GenBank Accession Number:

NM\_021962

GeneID (NCBI):

29

UNIPROT ID:

Q12979

Full Name:

active BCR-related gene

Calculated MW:

98 kDa

Observed MW:

97-100 kDa

Purification Method:

Protein A purification

CloneNo.:

241121G1

Recommended Dilutions:

WB 1:5000-1:50000

## Applications

Tested Applications:

WB, ELISA

Species Specificity:

human, mouse, rat

Positive Controls:

WB : SH-SY5Y cells, mouse brain tissue, SW480 cells, U-251 cells, U-87 MG cells, rat brain tissue

## Background Information

ABR (Active breakpoint cluster region-related protein) is the only protein known in humans and mice to share high homology with BCR (68% amino acid identity). BCR(Breakpoint cluster region) gene was originally identified due to its involvement in a specific chromosomal translocation that causes the development of chronic myeloid leukemia and a subset of acute lymphoblastic leukemia. The C-terminus is a GTPase-activating protein domain which stimulates GTP hydrolysis by RAC1, RAC2 and CDC42. (PMID: 17116687, PMID: 37507586)

## Storage

Storage:

Store at -20°C. Stable for one year after shipment.

Storage Buffer:

PBS with 0.02% sodium azide and 50% glycerol pH 7.3.

Aliquoting is unnecessary for -20°C storage

For technical support and original validation data for this product please contact:

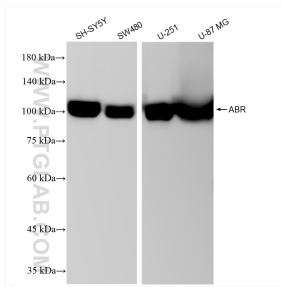
T: 4006900926

E: [Proteintech-CN@ptglab.com](mailto:Proteintech-CN@ptglab.com)

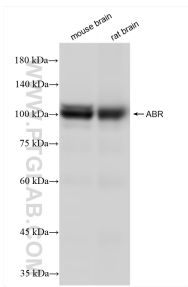
W: [ptgcn.com](http://ptgcn.com)

This product is exclusively available under Proteintech Group brand and is not available to purchase from any other manufacturer.

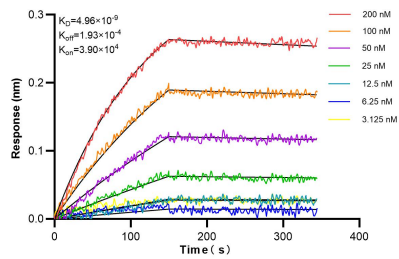
## Selected Validation Data



Various lysates were subjected to SDS PAGE followed by western blot with 84011-6-RR (ABR antibody) at dilution of 1:12000 incubated at room temperature for 1.5 hours.



Various lysates were subjected to SDS PAGE followed by western blot with 84011-6-RR (ABR antibody) at dilution of 1:12000 incubated at room temperature for 1.5 hours.



Biolayer interferometry (BLI) kinetic assays of 84011-6-RR against Human ABR were performed. The affinity constant is 4.96 nM.