

For Research Use Only

ABR Recombinant antibody, PBS Only

Catalog Number: 84011-6-PBS



Basic Information

Catalog Number:

84011-6-PBS

Size:

1 mg/ml

Source:

Rabbit

Isotype:

IgG

Immunogen Catalog Number:

AG29522

GenBank Accession Number:

NM_021962

GeneID (NCBI):

29

UNIPROT ID:

Q12979

Full Name:

active BCR-related gene

Calculated MW:

98 kDa

Observed MW:

97-100 kDa

Purification Method:

Protein A purification

CloneNo.:

241121G1

Applications

Tested Applications:

WB, Indirect ELISA

Species Specificity:

human, mouse, rat

Background Information

ABR (Active breakpoint cluster region-related protein) is the only protein known in humans and mice to share high homology with BCR (68% amino acid identity). BCR(Breakpoint cluster region) gene was originally identified due to its involvement in a specific chromosomal translocation that causes the development of chronic myeloid leukemia and a subset of acute lymphoblastic leukemia. The C-terminus is a GTPase-activating protein domain which stimulates GTP hydrolysis by RAC1, RAC2 and CDC42. (PMID: 17116687, PMID: 37507586)

Storage

Storage:

Store at -80°C.

The product is shipped with ice packs. Upon receipt, store it immediately at -80°C

Storage Buffer:

PBS Only

For technical support and original validation data for this product please contact:

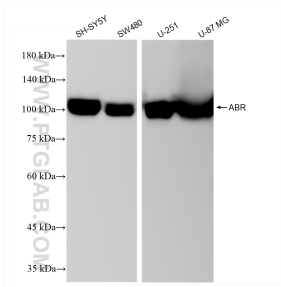
T: 4006900926

E: Proteintech-CN@ptglab.com

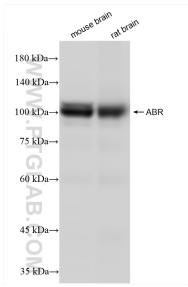
W: ptgcn.com

This product is exclusively available under Proteintech Group brand and is not available to purchase from any other manufacturer.

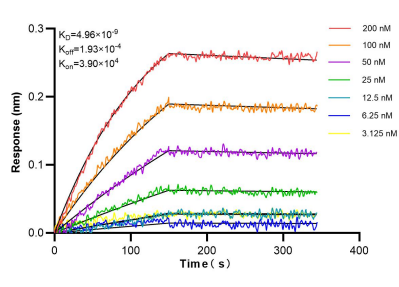
Selected Validation Data



Various lysates were subjected to SDS PAGE followed by western blot with 84011-6-RR (ABR antibody) at dilution of 1:12000 incubated at room temperature for 1.5 hours. This data was developed using the same antibody clone with 84011-6-PBS in a different storage buffer formulation.



Various lysates were subjected to SDS PAGE followed by western blot with 84011-6-RR (ABR antibody) at dilution of 1:12000 incubated at room temperature for 1.5 hours. This data was developed using the same antibody clone with 84011-6-PBS in a different storage buffer formulation.



Biolayer interferometry (BLI) kinetic assays of 84011-6-RR against Human ABR were performed. The affinity constant is 4.96 nM.