

For Research Use Only

# Mouse CTLA-4/CD152 Recombinant antibody, PBS Only (Capture)

Catalog Number: 83995-3-PBS



## Basic Information

Catalog Number:

83995-3-PBS

Concentration:

1 mg/ml

Source:

Rabbit

Isotype:

IgG

Immunogen Catalog Number:

EG0632

GenBank Accession Number:

NM\_009843.4

GeneID (NCBI):

12477

UNIPROT ID:

P09793

Full Name:

cytotoxic T-lymphocyte-associated protein 4

Calculated MW:

25 kDa

Purification Method:

Protein A purification

CloneNo.:

241100C6

## Applications

Tested Applications:

Cytometric bead array, Sandwich ELISA, Indirect ELISA, Sample test

Species Specificity:

mouse

## Background Information

### Storage

Storage:

Store at -80°C.

The product is shipped with ice packs. Upon receipt, store it immediately at -80°C

Storage Buffer:

PBS only, pH7.3

For technical support and original validation data for this product please contact:

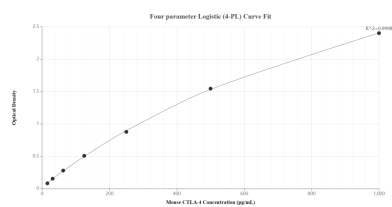
T: 4006900926

E: [Proteintech-CN@ptglab.com](mailto:Proteintech-CN@ptglab.com)

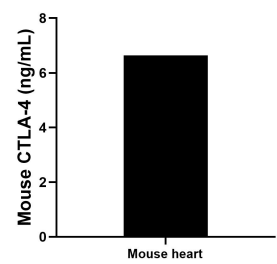
W: [ptgcn.com](http://ptgcn.com)

This product is exclusively available under Proteintech Group brand and is not available to purchase from any other manufacturer.

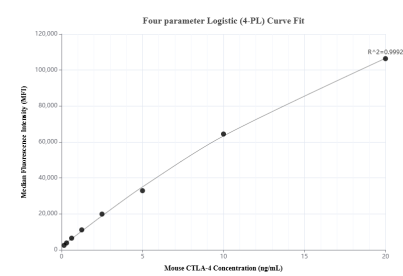
## Selected Validation Data



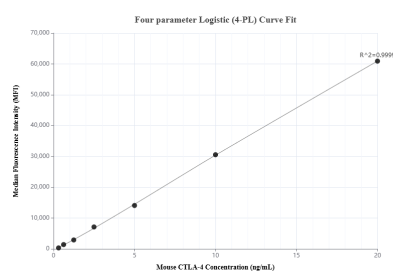
Sandwich ELISA standard curve of MP00907-4, Mouse CTLA-4/CD152 Recombinant Matched Antibody Pair - PBS only. 83995-3-PBS was coated to a plate as the capture antibody and incubated with serial dilutions of standard Eg0632. 83995-5-PBS was HRP conjugated as the detection antibody. Range: 15.6-1000 pg/mL



The mean CTLA-4/CD152 concentration was determined to be 6.64 ng/mL in mouse heart tissue extract based on a 1.20 mg/mL extract load.



Cytometric bead array standard curve of MP00907-1, MOUSE CTLA-4/CD152 Recombinant Matched Antibody Pair, PBS Only. Capture antibody: 83995-3-PBS. Detection antibody: 83995-4-PBS. Standard: Eg0632. Range: 0.156-20 ng/mL



Cytometric bead array standard curve of MP00907-3, MOUSE CTLA-4/CD152 Recombinant Matched Antibody Pair, PBS Only. Capture antibody: 83995-3-PBS. Detection antibody: 83995-1-PBS. Standard: Eg0632. Range: 0.156-20 ng/mL