

For Research Use Only

# CCDC22 Recombinant antibody

Catalog Number: 83992-1-RR

Featured Product



## Basic Information

Catalog Number:

83992-1-RR

Size:

1000  $\mu$ g/ml

Source:

Rabbit

Isotype:

IgG

Immunogen Catalog Number:

AG9980

GenBank Accession Number:

BC000972

GeneID (NCBI):

28952

UNIPROT ID:

O60826

Full Name:

coiled-coil domain containing 22

Calculated MW:

71 kDa

Observed MW:

71 kDa

Purification Method:

Protein A purification

CloneNo.:

241146A5

Recommended Dilutions:

WB 1:2000-1:10000

## Applications

Tested Applications:

WB, ELISA

Species Specificity:

human

Positive Controls:

WB : HeLa cells, HepG2 cells, HEK-293 cells, Jurkat cells

## Background Information

CCDC22 is a ubiquitously expressed coiled-coil domain protein. CCDC22 functions in the regulation of NF- $\kappa$ B (nuclear factor kappa-light-chain-enhancer of activated B cells) by interacting with COMMD (copper metabolism Murr1 domain-containing) proteins. ]

## Storage

Storage:

Store at -20°C. Stable for one year after shipment.

Storage Buffer:

PBS with 0.02% sodium azide and 50% glycerol pH 7.3.

Aliquoting is unnecessary for -20°C storage

For technical support and original validation data for this product please contact:

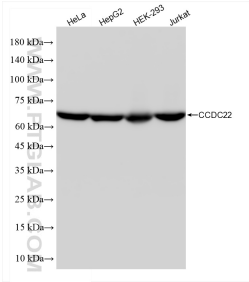
T: 4006900926

E: [Proteintech-CN@ptglab.com](mailto:Proteintech-CN@ptglab.com)

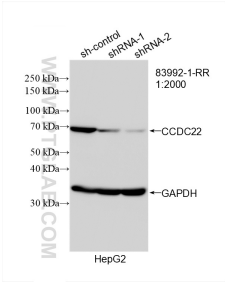
W: [ptgcn.com](http://ptgcn.com)

This product is exclusively available under Proteintech Group brand and is not available to purchase from any other manufacturer.

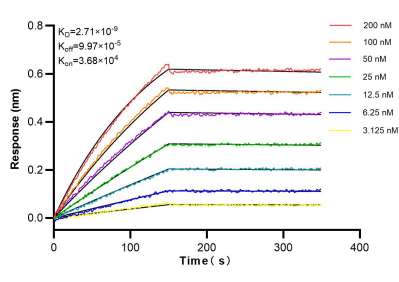
Selected Validation Data



Various lysates were subjected to SDS PAGE followed by western blot with 83992-1-RR (CCDC22 antibody) at dilution of 1:5000 incubated at room temperature for 1.5 hours.



WB result of CCDC22 antibody (83992-1-RR; 1:2000; incubated at room temperature for 1.5 hours) with sh-Control and sh-CCDC22 transfected HepG2 cells.



Biolayer interferometry (BLI) kinetic assays of 83992-1-RR against Human CCDC22 were performed. The affinity constant is 2.71 nM.