

For Research Use Only

# YTHDC2 Recombinant antibody, PBS Only (Capture/Detector)

Catalog Number: 83970-3-PBS



## Basic Information

Catalog Number:

83970-3-PBS

Concentration:

1 mg/ml

Source:

Rabbit

Isotype:

IgG

Immunogen Catalog Number:

AG26690

GenBank Accession Number:

BC137285

GeneID (NCBI):

64848

UNIPROT ID:

Q9H6S0

Full Name:

YTH domain containing 2

Purification Method:

Protein A purification

CloneNo.:

241123G1

## Applications

Tested Applications:

Cytometric bead array, Sandwich ELISA, Indirect ELISA,  
Sample test

Species Specificity:

human

## Background Information

### Storage

Storage:

Store at -80°C.

The product is shipped with ice packs. Upon receipt, store it immediately at -80°C

Storage Buffer:

PBS Only

For technical support and original validation data for this product please contact:

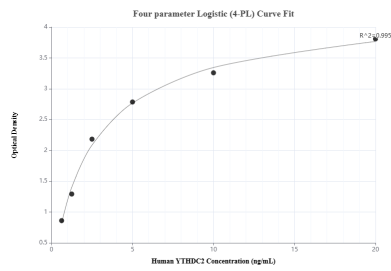
T: 4006900926

E: [Proteintech-CN@ptglab.com](mailto:Proteintech-CN@ptglab.com)

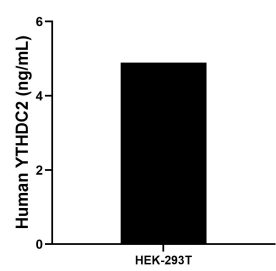
W: [ptgcn.com](http://ptgcn.com)

This product is exclusively available under Proteintech Group brand and is not available to purchase from any other manufacturer.

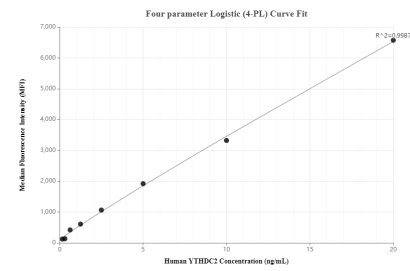
## Selected Validation Data



Sandwich ELISA standard curve of MP00893-3, Human YTHDC2 Recombinant Matched Antibody Pair - PBS only. 83970-3-PBS was coated to a plate as the capture antibody and incubated with serial dilutions of standard Ag26690. 83970-1-PBS was HRP conjugated as the detection antibody. Range: 0.625-20 ng/mL



The mean YTHDC2 concentration was determined to be 4.89 ng/mL in HEK-293T cell extract based on a 1.4 mg/mL extract load.



Cytometric bead array standard curve of MP00893-2, YTHDC2 Recombinant Matched Antibody Pair, PBS Only. Capture antibody: 83970-2-PBS. Detection antibody: 83970-3-PBS. Standard: Ag26690. Range: 0.156-20 ng/mL