

For Research Use Only

# YTHDC2 Recombinant antibody, PBS Only (Detector)

Catalog Number: 83970-1-PBS



## Basic Information

Catalog Number: 83970-1-PBS	GenBank Accession Number: BC137285	Purification Method: Protein A purification
Concentration: 1 mg/ml	GeneID (NCBI): 64848	CloneNo.: 241123A9
Source: Rabbit	UNIPROT ID: Q9H6S0	
Isotype: IgG	Full Name: YTH domain containing 2	
Immunogen Catalog Number: AG26690	Observed MW: 160 kDa	

## Applications

**Tested Applications:**  
WB, IHC, FC (Intra), Cytometric bead array, Sandwich  
ELISA, Indirect ELISA, Sample test

**Species Specificity:**  
human, mouse

## Background Information

YTHDC2, also named as Probable ATP-dependent RNA helicase YTHDC2, is a 1430 amino acid protein, which belongs to the DEAD box helicase family. YTHDC2 specifically recognizes and binds N6-methyladenosine (m6A)-containing RNAs. M6A is a modification present at internal sites of mRNAs and some non-coding RNAs and plays a role in the efficiency of mRNA splicing, processing and stability.

## Storage

**Storage:**  
Store at -80°C.  
**The product is shipped with ice packs. Upon receipt, store it immediately at -80°C**

**Storage Buffer:**  
PBS Only

For technical support and original validation data for this product please contact:

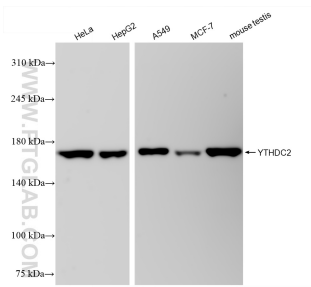
T: 4006900926

E: Proteintech-CN@ptglab.com

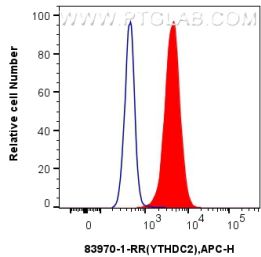
W: ptgcn.com

**This product is exclusively available under Proteintech Group brand and is not available to purchase from any other manufacturer.**

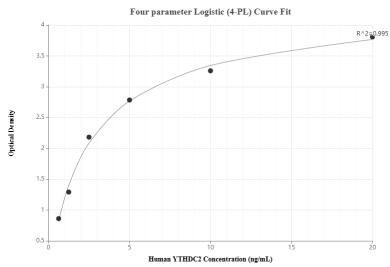
Selected Validation Data



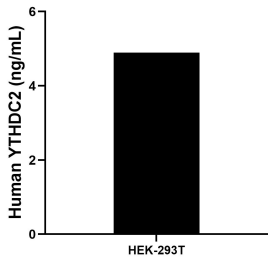
Various lysates were subjected to SDS PAGE followed by western blot with 83970-1-RR (YTHDC2 antibody) at dilution of 1:10000 incubated at room temperature for 1.5 hours. This data was developed using the same antibody clone with 83970-1-PBS in a different storage buffer formulation.



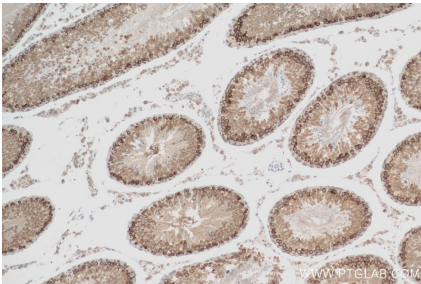
1x10<sup>6</sup> HepG2 cells were intracellularly stained with 0.25 ug YTHDC2 Recombinant antibody (83970-1-RR, Clone:241123A9) and APC-Conjugated AffiniPure Goat Anti-Rabbit IgG(H+L) (red), or 0.25 ug Isotype Control (blue). Cells were fixed with 4% PFA and permeabilized with Flow Cytometry Perm Buffer (PF00011-C). This data was developed using the same antibody clone with 83970-1-PBS in a different storage buffer formulation.



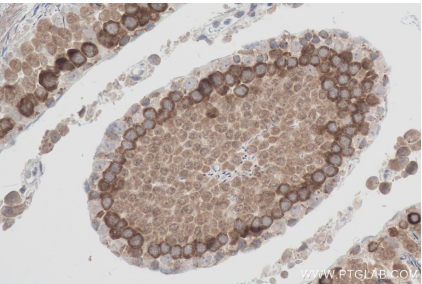
Sandwich ELISA standard curve of MP00893-3, Human YTHDC2 Recombinant Matched Antibody Pair - PBS only. 83970-3-PBS was coated to a plate as the capture antibody and incubated with serial dilutions of standard Ag26690. 83970-1-PBS was HRP conjugated as the detection antibody. Range: 0.625-20 ng/mL



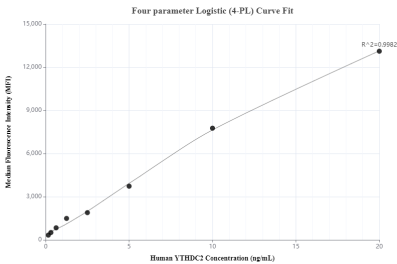
The mean YTHDC2 concentration was determined to be 4.89 ng/mL in HEK-293T cell extract based on a 1.4 mg/mL extract load.



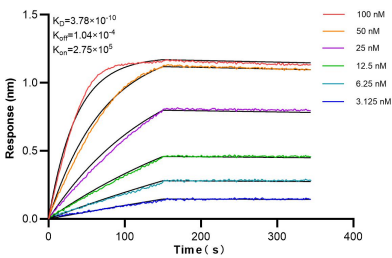
Immunohistochemical analysis of paraffin-embedded rat testis tissue slide using 83970-1-RR (YTHDC2 antibody) at dilution of 1:200 (under 10x lens). Heat mediated antigen retrieval with Tris-EDTA buffer (pH 9.0). This data was developed using the same antibody clone with 83970-1-PBS in a different storage buffer formulation.



Immunohistochemical analysis of paraffin-embedded rat testis tissue slide using 83970-1-RR (YTHDC2 antibody) at dilution of 1:200 (under 40x lens). Heat mediated antigen retrieval with Tris-EDTA buffer (pH 9.0). This data was developed using the same antibody clone with 83970-1-PBS in a different storage buffer formulation.



Cytometric bead array standard curve of MP00893-1, YTHDC2 Recombinant Matched Antibody Pair, PBS Only. Capture antibody: 83970-4-PBS. Detection antibody: 83970-1-PBS. Standard: Ag26690. Range: 0.156-20 ng/mL



Biolayer interferometry (BLI) kinetic assays of 83970-1-RR against Human YTHDC2 were performed. The affinity constant is 0.378 nM.