

For Research Use Only

# SLC38A2 Recombinant antibody, PBS Only (Capture/Detector)

Catalog Number: 83968-1-PBS



## Basic Information

Catalog Number:

83968-1-PBS

Size:

1 mg/ml

Source:

Rabbit

Isotype:

IgG

Immunogen Catalog Number:

AG23082

GenBank Accession Number:

BC040342

GeneID (NCBI):

54407

UNIPROT ID:

Q96QD8

Full Name:

solute carrier family 38, member 2

Purification Method:

Protein A purification

CloneNo.:

241059A10

## Applications

Tested Applications:

Cytometric bead array, Indirect ELISA

Species Specificity:

human

## Background Information

### Storage

Storage:

Store at -80°C.

The product is shipped with ice packs. Upon receipt, store it immediately at -80°C

Storage Buffer:

PBS Only

For technical support and original validation data for this product please contact:

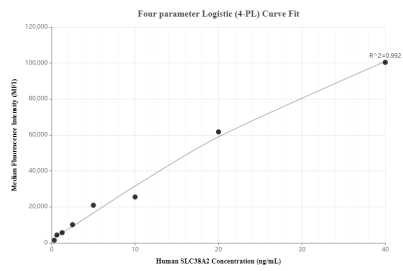
T: 4006900926

E: Proteintech-CN@ptglab.com

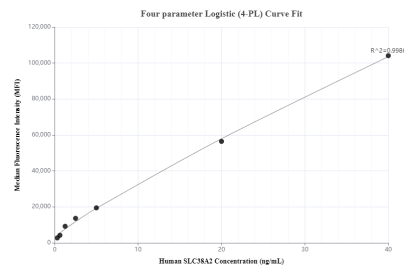
W: ptgcn.com

This product is exclusively available under Proteintech Group brand and is not available to purchase from any other manufacturer.

# Selected Validation Data



Cytometric bead array standard curve of MP00889-1, SLC38A2 Recombinant Matched Antibody Pair, PBS Only. Capture antibody: 83968-1-PBS. Detection antibody: 83968-2-PBS. Standard: Ag23082. Range: 0.313-40 ng/mL



Cytometric bead array standard curve of MP00889-2, SLC38A2 Recombinant Matched Antibody Pair, PBS Only. Capture antibody: 83968-4-PBS. Detection antibody: 83968-1-PBS. Standard: Ag23082. Range: 0.313-40 ng/mL