

For Research Use Only

# SQRDL Recombinant antibody, PBS Only (Capture)

Catalog Number: 83960-3-PBS



## Basic Information

Catalog Number:

83960-3-PBS

Concentration:

1 mg/ml

Source:

Rabbit

Isotype:

IgG

Immunogen Catalog Number:

AG10762

GenBank Accession Number:

BC016836

GeneID (NCBI):

58472

UNIPROT ID:

Q9Y6N5

Full Name:

sulfide quinone reductase-like (yeast)

Calculated MW:

450 aa, 50 kDa

Observed MW:

50 kDa

Purification Method:

Protein A purification

CloneNo.:

241226E8

## Applications

Tested Applications:

WB, Cytometric bead array, Indirect ELISA

Species Specificity:

human

## Background Information

### Storage

Storage:

Store at -80°C.

The product is shipped with ice packs. Upon receipt, store it immediately at -80°C

Storage Buffer:

PBS Only

For technical support and original validation data for this product please contact:

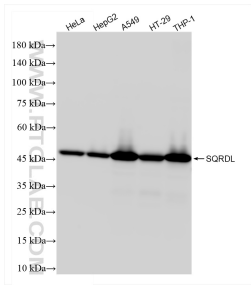
T: 4006900926

E: [Proteintech-CN@ptglab.com](mailto:Proteintech-CN@ptglab.com)

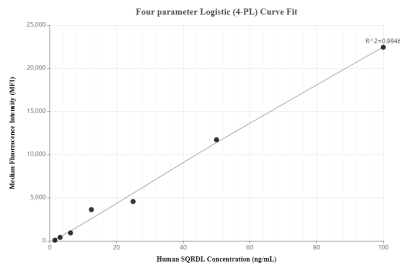
W: [ptgcn.com](http://ptgcn.com)

This product is exclusively available under Proteintech Group brand and is not available to purchase from any other manufacturer.

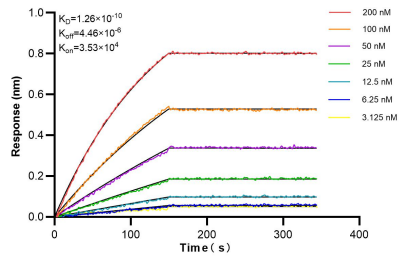
## Selected Validation Data



Various lysates were subjected to SDS PAGE followed by western blot with 83960-3-RR (SQRDL antibody) at dilution of 1:10000 incubated at room temperature for 1.5 hours. This data was developed using the same antibody clone with 83960-3-PBS in a different storage buffer formulation.



Cytometric bead array standard curve of MP00918-2, SQRDL Recombinant Matched Antibody Pair, PBS Only. Capture antibody: 83960-3-PBS. Detection antibody: 83960-4-PBS. Standard: Ag10762. Range: 1.56-100 ng/mL.



Biolayer interferometry (BLI) kinetic assays of 83960-3-RR against Human SQRDL were performed. The affinity constant is 0.126 nM.