

For Research Use Only

PEA15 Recombinant antibody

Catalog Number: 83958-2-RR

Featured Product



Basic Information

Catalog Number:

83958-2-RR

Concentration:

1000 μ g/ml

Source:

Rabbit

Isotype:

IgG

Immunogen Catalog Number:

AG13782

GenBank Accession Number:

BC002426

GeneID (NCBI):

8682

UNIPROT ID:

Q15121

Full Name:

phosphoprotein enriched in astrocytes

15

Calculated MW:

130 aa, 15 kDa

Observed MW:

13-15 kDa

Purification Method:

Protein A purification

CloneNo.:

241044G8

Recommended Dilutions:

WB 1:1000-1:6000

Applications

Tested Applications:

WB, ELISA

Species Specificity:

human, mouse, rat

Positive Controls:

WB : C6 cells, COLO 320 cells, Neuro-2a cells, SH-SY5Y cells, U-87 MG cells, fetal human brain tissue, mouse brain tissue, rat brain tissue

Background Information

Phosphoprotein Enriched in Astrocytes 15 kDa (PEA15), also known as PED-15, is a small, death effector-domain (DED)-containing protein that was recently demonstrated to inhibit tumor necrosis factor- α -induced apoptosis and to reverse the inhibition of integrin activation due to H-Ras. PEA15 is a 15 kDa protein that is highly expressed in the nervous system with particularly high levels in astrocytes and neurons of the hippocampus. PEA15 is a cytoplasmic protein that sits at an important junction in intracellular signalling and can regulate diverse cellular processes, such as proliferation and apoptosis, dependent upon stimulation.

Storage

Storage:

Store at -20°C. Stable for one year after shipment.

Storage Buffer:

PBS with 0.02% sodium azide and 50% glycerol pH 7.3.

Aliquoting is unnecessary for -20°C storage

For technical support and original validation data for this product please contact:

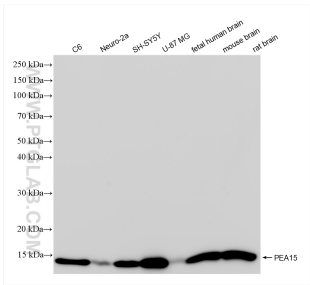
T: 4006900926

E: Proteintech-CN@ptglab.com

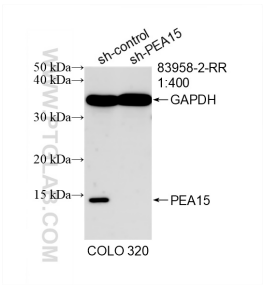
W: ptgcn.com

This product is exclusively available under Proteintech Group brand and is not available to purchase from any other manufacturer.

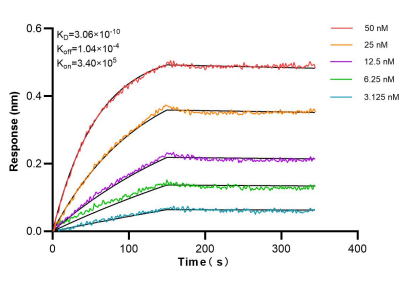
Selected Validation Data



Various lysates were subjected to SDS PAGE followed by western blot with 83958-2-RR (PEA15 antibody) at dilution of 1:3000 incubated at room temperature for 1.5 hours.



WB result of PEA15 antibody (83958-2-RR; 1:400; incubated at room temperature for 1.5 hours) with sh-Control and sh-PEA15 transfected COLO 320 cells.



Biolayer interferometry (BLI) kinetic assays of 83958-2-RR against Human PEA15 were performed. The affinity constant is 0.306 nM.