

For Research Use Only

PEA15 Recombinant antibody, PBS Only (Capture)

Catalog Number: 83958-2-PBS

Featured Product



Basic Information

Catalog Number:

83958-2-PBS

Concentration:

1 mg/ml

Source:

Rabbit

Isotype:

IgG

Immunogen Catalog Number:

AG13782

GenBank Accession Number:

BC002426

GeneID (NCBI):

8682

UNIPROT ID:

Q15121

Full Name:

phosphoprotein enriched in astrocytes

15

Calculated MW:

130 aa, 15 kDa

Observed MW:

13-15 kDa

Purification Method:

Protein A purification

CloneNo.:

241044G8

Applications

Tested Applications:

WB, Cytometric bead array, Indirect ELISA

Species Specificity:

human, mouse, rat

Background Information

Phosphoprotein Enriched in Astrocytes 15 kDa (PEA15), also known as PED-15, is a small, death effector-domain (DED)-containing protein that was recently demonstrated to inhibit tumor necrosis factor- α -induced apoptosis and to reverse the inhibition of integrin activation due to H-Ras. PEA15 is a 15 kDa protein that is highly expressed in the nervous system with particularly high levels in astrocytes and neurons of the hippocampus. PEA15 is a cytoplasmic protein that sits at an important junction in intracellular signalling and can regulate diverse cellular processes, such as proliferation and apoptosis, dependent upon stimulation.

Storage

Storage:

Store at -80°C.

The product is shipped with ice packs. Upon receipt, store it immediately at -80°C

Storage Buffer:

PBS Only

For technical support and original validation data for this product please contact:

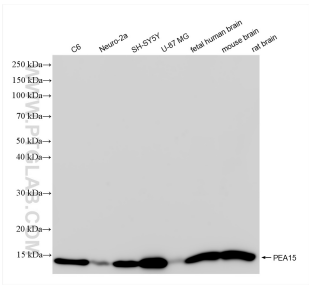
T: 4006900926

E: Proteintech-CN@ptglab.com

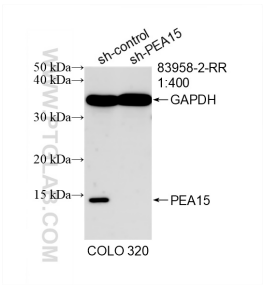
W: ptgcn.com

This product is exclusively available under Proteintech Group brand and is not available to purchase from any other manufacturer.

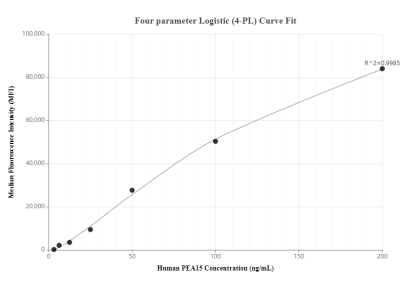
Selected Validation Data



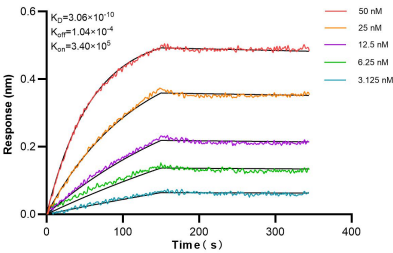
Various lysates were subjected to SDS PAGE followed by western blot with 83958-2-RR (PEA15 antibody) at dilution of 1:3000 incubated at room temperature for 1.5 hours. This data was developed using the same antibody clone with 83958-2-PBS in a different storage buffer formulation.



WB result of PEA15 antibody (83958-2-RR; 1:400; incubated at room temperature for 1.5 hours) with sh-Control and sh-PEA15 transfected COLO 320 cells. This data was developed using the same antibody clone with 83958-2-PBS in a different storage buffer formulation.



Cytometric bead array standard curve of MP00916-1, PEA15 Recombinant Matched Antibody Pair, PBS Only. Capture antibody: 83958-2-PBS. Detection antibody: 83958-1-PBS. Standard: Ag13782. Range: 3.125-200 ng/mL



Biolayer interferometry (BLI) kinetic assays of 83958-2-RR against Human PEA15 were performed. The affinity constant is 0.306 nM.