

For Research Use Only

# GDF9 Recombinant antibody, PBS Only (Capture)

Catalog Number: 83956-2-PBS



## Basic Information

Catalog Number:	83956-2-PBS	GenBank Accession Number:	BC096228	Purification Method:	Protein A purification
Size:	1 mg/ml	GeneID (NCBI):	2661	CloneNo.:	241011G3
Source:	Rabbit	UNIPROT ID:	O60383		
Isotype:	IgG	Full Name:	growth differentiation factor 9		
Immunogen Catalog Number:	AG29603	Calculated MW:	454 aa, 51 kDa		

## Applications

**Tested Applications:**  
Cytometric bead array, Sandwich ELISA, Indirect ELISA, Sample test

**Species Specificity:**  
human

## Background Information

### Storage

**Storage:**  
Store at -80°C.  
**The product is shipped with ice packs. Upon receipt, store it immediately at -80°C**

**Storage Buffer:**  
PBS Only

For technical support and original validation data for this product please contact:

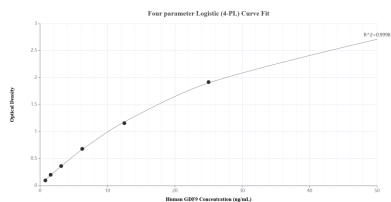
T: 4006900926

E: [Proteintech-CN@ptglab.com](mailto:Proteintech-CN@ptglab.com)

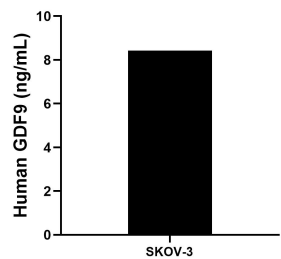
W: [ptgcn.com](http://ptgcn.com)

**This product is exclusively available under Proteintech Group brand and is not available to purchase from any other manufacturer.**

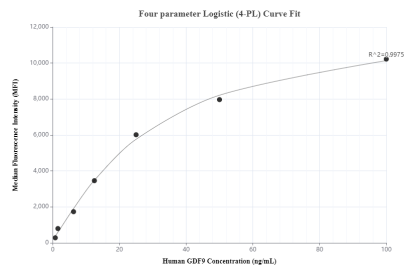
## Selected Validation Data



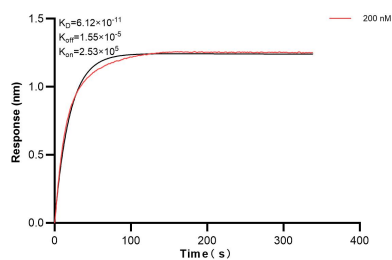
Sandwich ELISA standard curve of MP00911-1, Human GDF9 Recombinant Matched Antibody Pair - PBS only. 83956-2-PBS was coated to a plate as the capture antibody and incubated with serial dilutions of standard Ag29603. 83956-1-PBS was HRP conjugated as the detection antibody. Range: 0.781-50 ng/mL.



The mean GDF9 concentration was determined to be 8.42 ng/mL in SKOV-3 cell extract based on a 2.30 mg/mL extract load.



Cytometric bead array standard curve of MP00911-1, GDF9 Recombinant Matched Antibody Pair, PBS Only. Capture antibody: 83956-2-PBS. Detection antibody: 83956-1-PBS. Standard: Ag29603. Range: 0.781-100 ng/mL.



Biolayer interferometry (BLI) kinetic assay of 83956-2-PBS against Human GDF9 was performed. The affinity constant is 61.2 pM.