

TLE3 Recombinant antibody

Catalog Number: 83955-4-RR

Basic Information

Catalog Number:

83955-4-RR

Size:

1000 ug/ml

Source:

Rabbit

Isotype:

IgG

Immunogen Catalog Number:

AG1930

GenBank Accession Number:

BC015729

GeneID (NCBI):

7090

UNIPROT ID:

Q04726

Full Name:

transducin-like enhancer of split 3
(E(sp1) homolog, Drosophila)

Calculated MW:

772 aa, 83 kDa

Purification Method:

Protein A purification

CloneNo.:

240680G3

Recommended Dilutions:

IF/ICC 1:200-1:800

Applications

Tested Applications:

IF/ICC, ELISA

Species Specificity:

human

Positive Controls:

IF/ICC : HepG2 cells,

Background Information

TLE3, also named as KIAA1547 and ESG3, belongs to the WD repeat Groucho/TLE family. It is a transcriptional corepressor that binds to a number of transcription factors. It inhibits the transcriptional activation mediated by CTNNB1 and TCF family members in Wnt signaling. The effects of full-length TLE family members may be modulated by association with dominant-negative AES. TLE3 is a member of the transducin-like enhancer of split (TLE) family of proteins that have been implicated in the tumorigenesis and classification of sarcomas. It is a candidate biomarker of response to taxane

Storage

Storage:

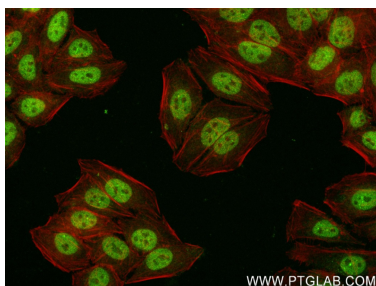
Store at -20°C. Stable for one year after shipment.

Storage Buffer:

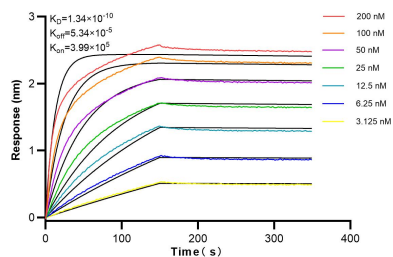
PBS with 0.02% sodium azide and 50% glycerol pH 7.3.

Aliquoting is unnecessary for -20°C storage

Selected Validation Data



Immunofluorescent analysis of (4% PFA) fixed HepG2 cells using TLE3 antibody (83955-4-RR, Clone: 240680G3) at dilution of 1:400 and CoraLite®488-Conjugated AffiniPure Goat Anti-Rabbit IgG(H+L) (SA00013-2), CL594-Phalloidin (red).



Biolayer interferometry (BLI) kinetic assays of 83955-4-RR against Human TLE3 were performed. The affinity constant is 0.134 nM.