

For Research Use Only

# ATG4D Recombinant antibody, PBS Only (Detector)

Catalog Number: 83951-4-PBS



## Basic Information

Catalog Number:

83951-4-PBS

Size:

1 mg/ml

Source:

Rabbit

Isotype:

IgG

Immunogen Catalog Number:

AG10177

GenBank Accession Number:

BC068992

GeneID (NCBI):

84971

UNIPROT ID:

Q86TLO

Full Name:

ATG4 autophagy related 4 homolog D  
(S. cerevisiae)

Calculated MW:

474 aa, 53 kDa

Observed MW:

53 kDa

Purification Method:

Protein A purification

CloneNo.:

241035G8

## Applications

Tested Applications:

WB, IHC, Cytometric bead array, Indirect ELISA

Species Specificity:

human, rat

## Background Information

ATG4D, a member of autophagy-related protein 4 (ATG4) family, plays an interplay role between autophagy and apoptosis in cancers. There are two Atg4 family members-Atg4C and Atg4D-contain cryptic mitochondrial targeting sequences immediately downstream of their canonical(DEVD) caspase cleavage sites. Consequently, caspase-cleaved Atg4D (DN63 Atg4D) localizes to the mitochondrial matrix when expressed in mammalian cells, where it undergoes further processing to a ~42 kDa mitochondrial form.

## Storage

Storage:

Store at -80°C.

**The product is shipped with ice packs. Upon receipt, store it immediately at -80°C**

Storage Buffer:

PBS Only

For technical support and original validation data for this product please contact:

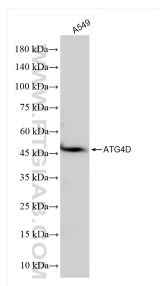
T: 4006900926

E: [Proteintech-CN@ptglab.com](mailto:Proteintech-CN@ptglab.com)

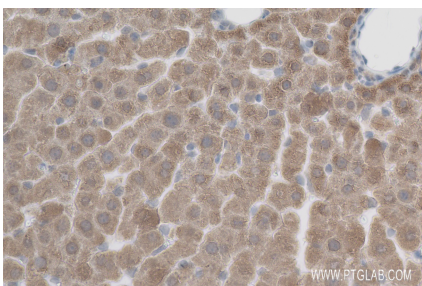
W: [ptgcn.com](http://ptgcn.com)

**This product is exclusively available under Proteintech Group brand and is not available to purchase from any other manufacturer.**

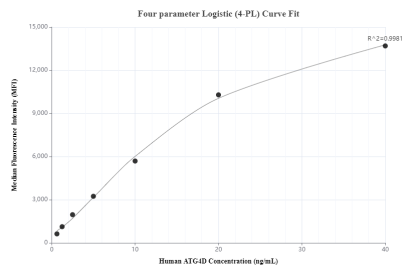
## Selected Validation Data



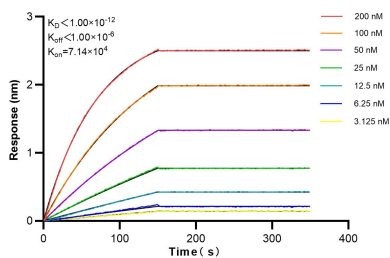
A549 cells were subjected to SDS PAGE followed by western blot with 83951-4-RR (ATG4D antibody) at dilution of 1:4000 incubated at room temperature for 1.5 hours. This data was developed using the same antibody clone with 83951-4-PBS in a different storage buffer formulation.



Immunohistochemical analysis of paraffin-embedded rat liver tissue slide using 83951-4-RR (ATG4D antibody) at dilution of 1:200 (under 40x lens). Heat mediated antigen retrieval with Tris-EDTA buffer (pH 9.0). This data was developed using the same antibody clone with 83951-4-PBS in a different storage buffer formulation.



Cytometric bead array standard curve of MP00902-3, ATG4D Recombinant Matched Antibody Pair, PBS Only. Capture antibody: 83951-1-PBS. Detection antibody: 83951-4-PBS. Standard: Ag10177. Range: 0.625-40 ng/mL.



Bioluminescence resonance transfer (BLI) kinetic assays of 83951-4-RR against Human ATG4D were performed. The affinity constant is below 1 pM.