

For Research Use Only

# Mouse P-Selectin/CD62P Recombinant antibody, PBS Only (Capture/Detector)

Catalog Number: 83947-1-PBS



## Basic Information

Catalog Number:

83947-1-PBS

Size:

1 mg/ml

Source:

Rabbit

Isotype:

IgG

GenBank Accession Number:

NM\_011347.2

GeneID (NCBI):

20344

UNIPROT ID:

Q01102

Full Name:

selectin, platelet

Calculated MW:

83 kDa

Purification Method:

Protein A purification

CloneNo.:

240766A1

## Applications

Tested Applications:

Cytometric bead array, Sandwich ELISA, Indirect ELISA, Sample test

Species Specificity:

mouse

## Background Information

### Storage

Storage:

Store at -80°C.

**The product is shipped with ice packs. Upon receipt, store it immediately at -80°C**

Storage Buffer:

PBS Only

For technical support and original validation data for this product please contact:

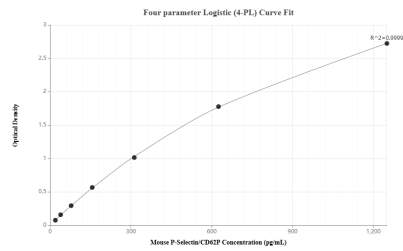
T: 4006900926

E: [Proteintech-CN@ptglab.com](mailto:Proteintech-CN@ptglab.com)

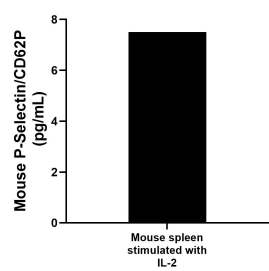
W: [ptgcn.com](http://ptgcn.com)

**This product is exclusively available under Proteintech Group brand and is not available to purchase from any other manufacturer.**

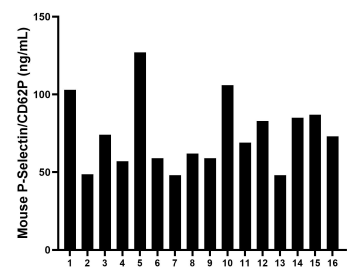
Selected Validation Data



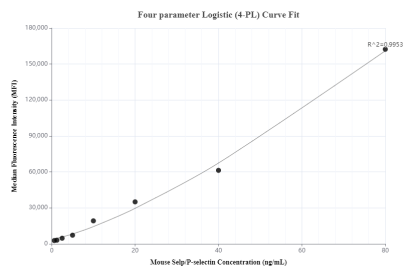
Sandwich ELISA standard curve of MP00926-2, Mouse P-Selectin/CD62P Recombinant Matched Antibody Pair - PBS only. 83947-1-PBS was coated to a plate as the capture antibody and incubated with serial dilutions of standard Eg0691. 83947-4-PBS was HRP conjugated as the detection antibody. Range: 19.5-1250 pg/mL



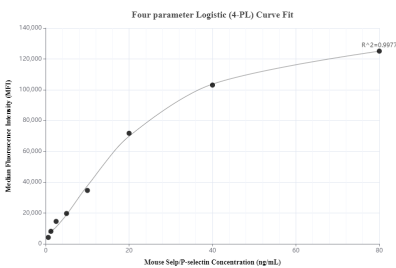
Mouse spleen cells ( $5 \times 10^6$  cells/mL) was cultured for 3 days in RPMI supplemented with 10% fetal bovine serum,  $5 \mu\text{M}$   $\beta$ -mercaptoethanol, 2 mM L-glutamine, 100 U/mL penicillin, 100  $\mu\text{g/mL}$  streptomycin sulfate and stimulated with 10 ng/mL IL-2 for 3 days. An aliquot of the cell culture supernate was removed, assayed for mouse P-Selectin/CD62P, and measured 7.5 pg/mL



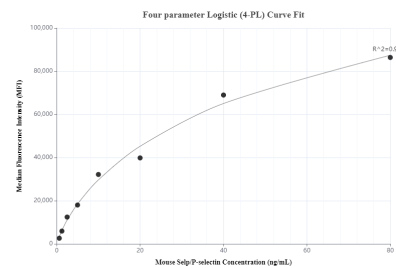
Serum of sixteen mice was measured. The mouse P-Selectin/CD62P concentration of detected samples was determined to be 74.29 ng/mL with a range of 48.00 - 127.00 ng/mL



Cytometric bead array standard curve of MP00926-1, MOUSE P-Selectin/CD62P Recombinant Matched Antibody Pair, PBS Only. Capture antibody: 83947-2-PBS. Detection antibody: 83947-1-PBS. Standard: Eg0691. Range: 0.625-80 ng/mL



Cytometric bead array standard curve of MP00926-2, MOUSE P-Selectin/CD62P Recombinant Matched Antibody Pair, PBS Only. Capture antibody: 83947-1-PBS. Detection antibody: 83947-4-PBS. Standard: Eg0691. Range: 0.625-80 ng/mL



Cytometric bead array standard curve of MP00926-3, MOUSE P-Selectin/CD62P Recombinant Matched Antibody Pair, PBS Only. Capture antibody: 83947-1-PBS. Detection antibody: 83947-3-PBS. Standard: Eg0691. Range: 0.625-80 ng/mL