

For Research Use Only

TOB1 Recombinant antibody

Catalog Number: 83944-2-RR



Basic Information

Catalog Number: 83944-2-RR	GenBank Accession Number: BC031406	Purification Method: Protein A purification
Concentration: 1000 µg/ml	GeneID (NCBI): 10140	CloneNo.: 241043A9
Source: Rabbit	UNIPROT ID: P50616	Recommended Dilutions: IHC 1:500-1:2000 IF/ICC 1:50-1:500
Isotype: IgG	Full Name: transducer of ERBB2, 1	
Immunogen Catalog Number: AG6714	Calculated MW: 38 kDa	

Applications

Tested Applications: IHC, IF/ICC, ELISA	Positive Controls:
Species Specificity: human	IHC : human stomach cancer tissue, IF/ICC : HeLa cells,

Note-IHC: suggested antigen retrieval with TE buffer pH 9.0; (*) Alternatively, antigen retrieval may be performed with citrate buffer pH 6.0

Background Information

TOB1, also known as APRO6 or TROB1, is a member of the transducer of erbB-2/B-cell translocation gene protein family. Members of this family are anti-proliferative factors that have the potential to regulate cell growth. The TOB1 protein has a large additional C-terminal region, which contains PAM2 motifs that mediate interactions with poly(A)-binding proteins. It is mainly located in the cell nucleus and will transfer between the cell nucleus and the cytoplasm. The more phosphorylation, the more obvious the cytoplasmic localization.

Storage

Storage:
Store at -20°C. Stable for one year after shipment.
Storage Buffer:
PBS with 0.02% sodium azide and 50% glycerol, pH7.3
Aliquoting is unnecessary for -20°C storage

For technical support and original validation data for this product please contact:

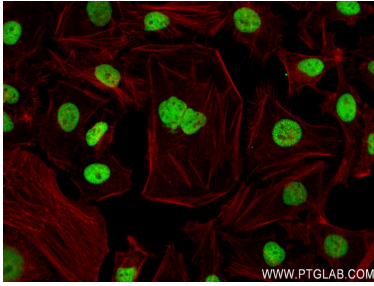
T: 4006900926

E: Proteintech-CN@ptglab.com

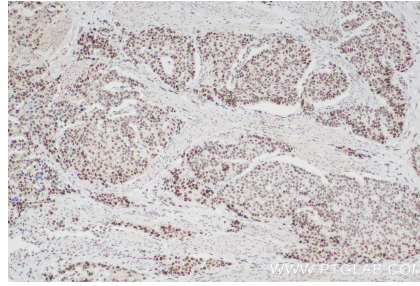
W: ptgcn.com

This product is exclusively available under Proteintech Group brand and is not available to purchase from any other manufacturer.

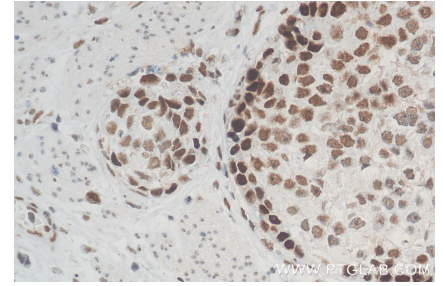
Selected Validation Data



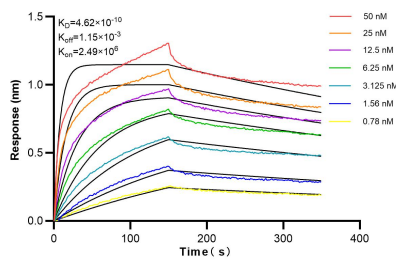
Immunofluorescent analysis of (4% PFA) fixed HeLa cells using TOB1 antibody (83944-2-RR, Clone: 241043A9) at dilution of 1:0 and CoraLite®488-Conjugated AffiniPure Goat Anti-Rabbit IgG(H+L) (SA00013-2), CL594-Phalloidin (red).



Immunohistochemical analysis of paraffin-embedded human stomach cancer tissue slide using 83944-2-RR (TOB1 antibody) at dilution of 1:1000 (under 10x lens). Heat mediated antigen retrieval with Tris-EDTA buffer (pH 9.0).



Immunohistochemical analysis of paraffin-embedded human stomach cancer tissue slide using 83944-2-RR (TOB1 antibody) at dilution of 1:1000 (under 40x lens). Heat mediated antigen retrieval with Tris-EDTA buffer (pH 9.0).



Biolayer interferometry (BLI) kinetic assays of 83944-2-RR against Human TOB1 were performed. The affinity constant is 0.462 nM.