

For Research Use Only

# BUB1B Recombinant antibody, PBS Only

Catalog Number: 83920-6-PBS

Featured Product



## Basic Information

Catalog Number:

83920-6-PBS

Concentration:

1 mg/ml

Source:

Rabbit

Isotype:

IgG

Immunogen Catalog Number:

AG34182

GenBank Accession Number:

BC018739

GeneID (NCBI):

701

UNIPROT ID:

O60566

Full Name:

budding uninhibited by  
benzimidazoles 1 homolog beta  
(yeast)

Calculated MW:

1050 aa, 120 kDa

Observed MW:

130 kDa

Purification Method:

Protein A purification

CloneNo.:

240969F7

## Applications

Tested Applications:

WB, IHC, IF/ICC, ELISA

Species Specificity:

human, mouse

## Background Information

BUB1B (Mitotic checkpoint serine/threonine-protein kinase BUB1 beta), also named as BUBR1, MAD3, and SSK1, belongs to the BUB1 subfamily. Human BUB1B is a 120 kDa protein that plays a central role in the spindle assembly checkpoint (SAC), the evolutionary conserved and self-regulatory system of higher organisms that monitors and repairs defects in chromosome segregation in mitotic cells (PMID: 22201036). In addition to phosphorylation, BUB1B is also subjected to posttranslational modifications, including acetylation (PMID: 22167194). Defects in BUB1B are the cause of the premature chromatid separation trait (PCS) and mosaic variegated aneuploidy syndrome type 1 (MVA1). Research has shown that a BUB1B isoform with a measured MW of about 65 kDa (PMID: 34620840).

## Storage

Storage:

Store at -80°C.

**The product is shipped with ice packs. Upon receipt, store it immediately at -80°C**

Storage Buffer:

PBS only, pH7.3

For technical support and original validation data for this product please contact:

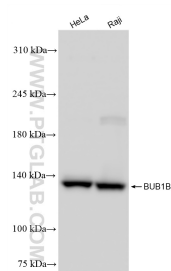
T: 4006900926

E: [Proteintech-CN@ptglab.com](mailto:Proteintech-CN@ptglab.com)

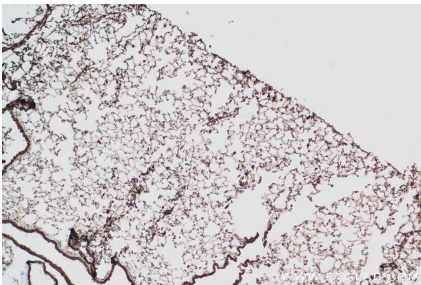
W: [ptgcn.com](http://ptgcn.com)

**This product is exclusively available under Proteintech Group brand and is not available to purchase from any other manufacturer.**

Selected Validation Data



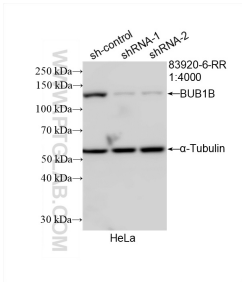
Various lysates were subjected to SDS PAGE followed by western blot with 83920-6-RR (BUB1B antibody) at dilution of 1:5000 incubated at room temperature for 1.5 hours. This data was developed using the same antibody clone with 83920-6-PBS in a different storage buffer formulation.



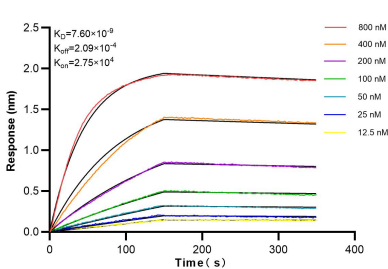
Immunohistochemical analysis of paraffin-embedded mouse lung tissue slide using 83920-6-RR (BUB1B antibody) at dilution of 1:400 (under 10x lens). Heat mediated antigen retrieval with Tris-EDTA buffer (pH 9.0). This data was developed using the same antibody clone with 83920-6-PBS in a different storage buffer formulation.



Immunofluorescent analysis of (4% PFA) fixed HeLa cells using BUB1B antibody (83920-6-RR, Clone: 240969F7) at dilution of 1:1000 and CoraLite®488-Conjugated Goat Anti-Rabbit IgG(H+L) (SA00013-2), CL594-phalloidin (red). This data was developed using the same antibody clone with 83920-6-PBS in a different storage buffer formulation.



WB result of BUB1B antibody (83920-6-RR; 1:4000; incubated at room temperature for 1.5 hours) with sh-Control and sh-BUB1B transfected HeLa cells. This data was developed using the same antibody clone with 83920-6-PBS in a different storage buffer formulation.



Biolayer interferometry (BLI) kinetic assays of 83920-6-RR against Human BUB1B were performed. The affinity constant is 7.60 nM.