

For Research Use Only

# NUCB2 Recombinant monoclonal antibody, PBS Only (Detector)

Catalog Number: 83917-6-PBS



## Basic Information

Catalog Number:

83917-6-PBS

Source:

Rabbit

Isotype:

IgG

Immunogen Catalog Number:

AG25152

GenBank Accession Number:

NM\_005013

GeneID (NCBI):

4925

UNIPROT ID:

P80303

Full Name:

nucleobindin 2

Calculated MW:

50 kDa

Purification Method:

Protein A purification

CloneNo.:

241037D4

## Applications

Tested Applications:

Sandwich ELISA, Indirect ELISA

Species Specificity:

human

## Background Information

### Storage

Storage:

Store at -80°C.

The product is shipped with ice packs. Upon receipt, store it immediately at -80°C

Storage Buffer:

PBS only, pH7.3

For technical support and original validation data for this product please contact:

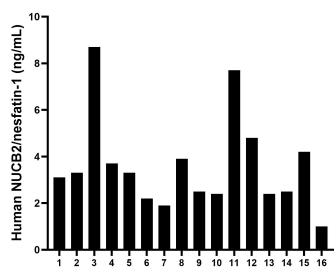
T: 4006900926

E: [Proteintech-CN@ptglab.com](mailto:Proteintech-CN@ptglab.com)

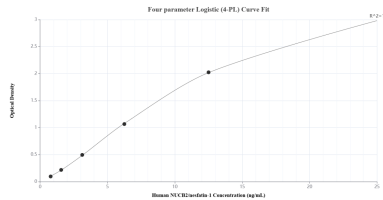
W: [ptgcn.com](http://ptgcn.com)

This product is exclusively available under Proteintech Group brand and is not available to purchase from any other manufacturer.

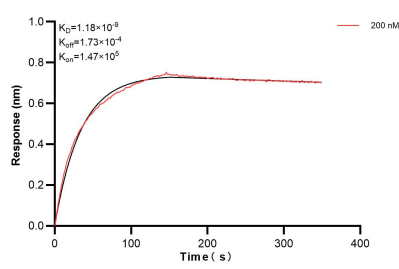
## Selected Validation Data



Serum of sixteen individual healthy human donors was measured. The NUCB2/nesfatin-1 concentration of detected samples was determined to be 3.61 ng/mL with a range of 1.05-8.70 ng/mL.



Sandwich ELISA standard curve of MP00864-4, Human NUCB2/nesfatin-1 Recombinant Matched Antibody Pair - PBS only. 83917-1-PBS was coated to a plate as the capture antibody and incubated with serial dilutions of standard Ag25152. 83917-6-PBS was HRP conjugated as the detection antibody. Range: 0.781-25 ng/mL.



Biolayer interferometry (BLI) kinetic assay of 83917-6-PBS against Human NUCB2 was performed. The affinity constant is 1.18 nM.