

For Research Use Only

B7-H6 Recombinant antibody, PBS Only (Capture)

Catalog Number: 83908-1-PBS



Basic Information

Catalog Number:

83908-1-PBS

Size:

1 mg/ml

Source:

Rabbit

Isotype:

IgG

GenBank Accession Number:

BC136800

GeneID (NCBI):

374383

UNIPROT ID:

Q68D85

Full Name:

hypothetical protein

DKFZp686O24166

Calculated MW:

51 kDa

Purification Method:

Protein A purification

CloneNo.:

240808C5

Applications

Tested Applications:

Cytometric bead array, Sandwich ELISA, Indirect ELISA, Sample test

Species Specificity:

human

Background Information

Storage

Storage:

Store at -80°C.

The product is shipped with ice packs. Upon receipt, store it immediately at -80°C

Storage Buffer:

PBS Only

For technical support and original validation data for this product please contact:

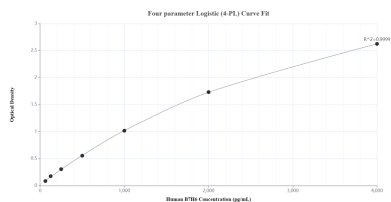
T: 4006900926

E: Proteintech-CN@ptglab.com

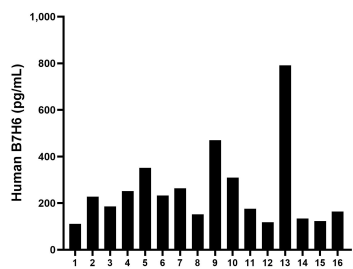
W: ptgcn.com

This product is exclusively available under Proteintech Group brand and is not available to purchase from any other manufacturer.

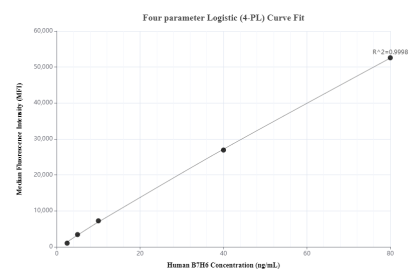
Selected Validation Data



Sandwich ELISA standard curve of MP00851-2, Human B7-H6 Recombinant Matched Antibody Pair - PBS only. 83908-1-PBS was coated to a plate as the capture antibody and incubated with serial dilutions of standard Eg0007. 83908-5-PBS was HRP conjugated as the detection antibody. Range: 62.5-4000 pg/mL



Serum of sixteen individual healthy human donors was measured. The B7-H6 concentration of detected samples was determined to be 253.6 pg/mL with a range of 110.6 - 790.9 pg/mL



Cytometric bead array standard curve of MP00851-1, B7-H6 Recombinant Matched Antibody Pair, PBS Only. Capture antibody: 83908-1-PBS. Detection antibody: 83908-2-PBS. Standard: Eg0007. Range: 2.5-80 ng/mL