

For Research Use Only

Mouse PD-L1/CD274 Recombinant antibody, PBS Only (Detector)

Catalog Number: 83906-1-PBS



Basic Information

Catalog Number:

83906-1-PBS

Size:

1 mg/ml

Source:

Rabbit

Isotype:

IgG

GenBank Accession Number:

NM_021893.3

GeneID (NCBI):

60533

UNIPROT ID:

Q9EP73

Full Name:

CD274 antigen

Calculated MW:

33 kDa

Purification Method:

Protein A purification

CloneNo.:

240993E1

Applications

Tested Applications:

Cytometric bead array, Sandwich ELISA, Indirect ELISA, Sample test

Species Specificity:

mouse

Background Information

Storage

Storage:

Store at -80°C.

The product is shipped with ice packs. Upon receipt, store it immediately at -80°C

Storage Buffer:

PBS Only

For technical support and original validation data for this product please contact:

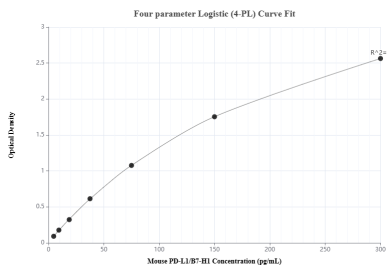
T: 4006900926

E: Proteintech-CN@ptglab.com

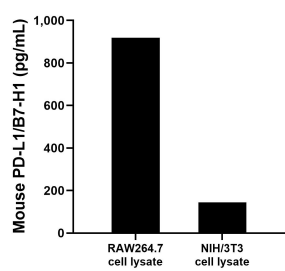
W: ptgcn.com

This product is exclusively available under Proteintech Group brand and is not available to purchase from any other manufacturer.

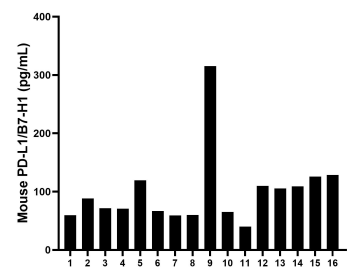
Selected Validation Data



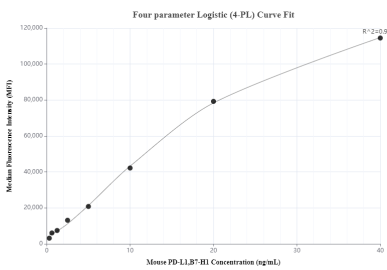
Sandwich ELISA standard curve of MP00844-2, Mouse PD-L1/CD274 Recombinant Matched Antibody Pair - PBS only. 83906-4-PBS was coated to a plate as the capture antibody and incubated with serial dilutions of standard Eg0986. 83906-1-PBS was HRP conjugated as the detection antibody. Range: 4.69-300 pg/mL



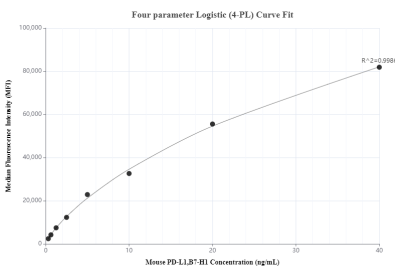
RAW264.7 and NIH/3T3 cell lysate were measured. The mouse PD-L1/CD274 concentration was determined to be 918.7 pg/mL in RAW264.7 cell lysate (based on a 4.8 mg/mL extract load) and 144.6 pg/mL in NIH/3T3 cell lysate (based on a 10.6 mg/mL extract load).



Serum of sixteen individual healthy human donors was measured. The mouse PD-L1/CD274 concentration of detected samples was determined to be 99.6 pg/mL with a range of 40.12 - 315.13 pg/mL.



Cytometric bead array standard curve of MP00844-2, MOUSE PD-L1/CD274 Recombinant Matched Antibody Pair, PBS Only. Capture antibody: 83906-4-PBS. Detection antibody: 83906-1-PBS. Standard: Eg0986. Range: 0.313-40 ng/mL



Cytometric bead array standard curve of MP00844-3, MOUSE PD-L1/CD274 Recombinant Matched Antibody Pair, PBS Only. Capture antibody: 83906-3-PBS. Detection antibody: 83906-1-PBS. Standard: Eg0986. Range: 0.313-40 ng/mL