

For Research Use Only

# CXCL8/IL-8 Recombinant antibody, PBS Only (Detector)

Catalog Number: 83903-1-PBS



## Basic Information

Catalog Number:

83903-1-PBS

Size:

1 mg/ml

Source:

Rabbit

Isotype:

IgG

GenBank Accession Number:

BC013615

GeneID (NCBI):

3576

ENSEMBL Gene ID:

ENSG00000169429

UNIPROT ID:

P10145

Full Name:

interleukin 8

Calculated MW:

99 aa, 11 kDa

Purification Method:

Protein A purification

CloneNo.:

240889C2

## Applications

Tested Applications:

Cytometric bead array, Sandwich ELISA, Indirect ELISA, Sample test

Species Specificity:

human

## Background Information

### Storage

Storage:

Store at -80°C.

The product is shipped with ice packs. Upon receipt, store it immediately at -80°C

Storage Buffer:

PBS Only

For technical support and original validation data for this product please contact:

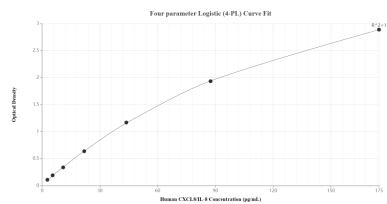
T: 4006900926

E: [Proteintech-CN@ptglab.com](mailto:Proteintech-CN@ptglab.com)

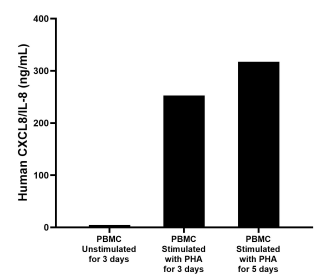
W: [ptgcn.com](http://ptgcn.com)

This product is exclusively available under Proteintech Group brand and is not available to purchase from any other manufacturer.

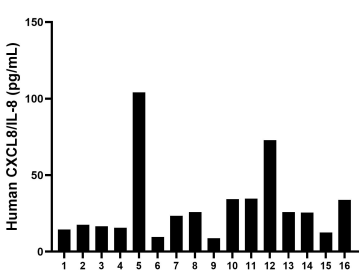
Selected Validation Data



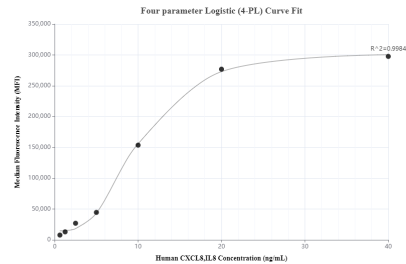
Sandwich ELISA standard curve of MP00830-3, Human CXCL8/IL-8 Recombinant Matched Antibody Pair - PBS only. 83903-5-PBS was coated to a plate as the capture antibody and incubated with serial dilutions of standard Eg0152. 83903-1-PBS was HRP conjugated as the detection antibody. Range: 2.73-175 pg/mL



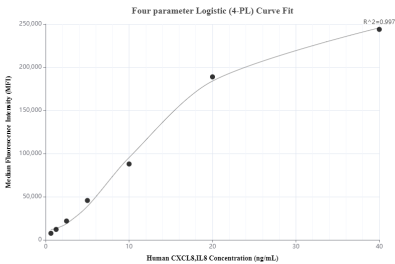
Human peripheral blood mononuclear cells (PBMC) were cultured unstimulated or stimulated with 10  $\mu$ g/mL PHA for 3 or 5 days. For the PBMC supernatant cultured for 3 days, the mean CXCL8/IL-8 concentration was determined to be 4.46 ng/mL in unstimulated PBMC supernatant, 252.88 ng/mL in PHA stimulated PBMC supernatant. For the PBMC supernatant cultured for 5 days, the mean CXCL8/IL-8 concentration was determined to be 317.16 ng/mL in PHA stimulated PBMC



Serum of sixteen individual healthy human donors was measured. The CXCL8/IL-8 concentration of detected samples was determined to be 29.8 pg/mL with a range of 8.9 - 104.1 pg/mL



Cytometric bead array standard curve of MP00830-1, CXCL8/IL-8 Recombinant Matched Antibody Pair, PBS Only. Capture antibody: 83903-3-PBS. Detection antibody: 83903-1-PBS. Standard: Eg0152. Range: 0.625-40 ng/mL



Cytometric bead array standard curve of MP00830-2, CXCL8/IL-8 Recombinant Matched Antibody Pair, PBS Only. Capture antibody: 83903-2-PBS. Detection antibody: 83903-1-PBS. Standard: Eg0152. Range: 0.625-40 ng/mL