

For Research Use Only

PLEC Recombinant antibody

Catalog Number: 83898-1-RR



Basic Information

Catalog Number:

83898-1-RR

Size:

1000 ug/ml

Source:

Rabbit

Isotype:

IgG

Immunogen Catalog Number:

AG29418

GenBank Accession Number:

NM_201380

GeneID (NCBI):

5339

UNIPROT ID:

Q15149

Full Name:

plectin 1, intermediate filament binding protein 500kDa

Calculated MW:

532 kDa

Observed MW:

510 kDa

Purification Method:

Protein A purification

CloneNo.:

240891A10

Recommended Dilutions:

WB 1:1000-1:8000

IF/ICC 1:250-1:1000

Applications

Tested Applications:

WB, IF/ICC, ELISA

Species Specificity:

human

Positive Controls:

WB : HaCaT cells, A431 cells, HEK-293 cells

IF/ICC : A431 cells,

Background Information

Plectin is a large (≥ 500 -kDa) protein that is normally expressed in various tissues including skin, muscle, and brain. It binds to a number of cytoskeletal proteins including microtubules and intermediate filaments and is involved in establishment and dynamic modulation of the cytoskeletal network. In normal cells, it plays a crucial role in cytoskeleton network organization. In keratinocytes, plectin is concentrated at the basal surface, where it links intermediate filaments to the cytoplasmic domain of transmembrane glycoproteins such as integrin beta-4. (PMID: 24218614, PMID: 28281696, PMID: 23750011)

Storage

Storage:

Store at -20°C . Stable for one year after shipment.

Storage Buffer:

PBS with 0.02% sodium azide and 50% glycerol pH 7.3.

Aliquoting is unnecessary for -20°C storage

For technical support and original validation data for this product please contact:

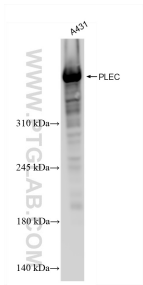
T: 4006900926

E: Proteintech-CN@ptglab.com

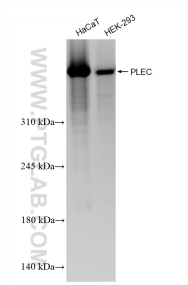
W: ptgcn.com

This product is exclusively available under Proteintech Group brand and is not available to purchase from any other manufacturer.

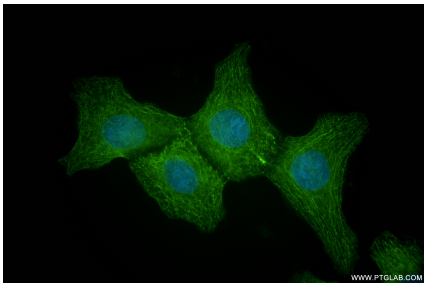
Selected Validation Data



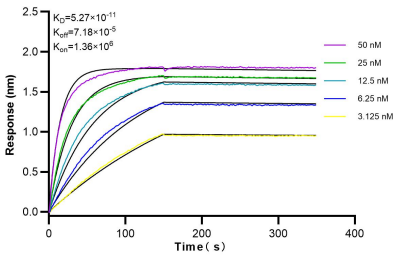
A431 cells were subjected to SDS PAGE followed by western blot with 83898-1-RR (PLEC antibody) at dilution of 1:4000 incubated at room temperature for 1.5 hours.



Various lysates were subjected to SDS PAGE followed by western blot with 83898-1-RR (PLEC antibody) at dilution of 1:4000 incubated at room temperature for 1.5 hours.



Immunofluorescent analysis of (-20°C Methanol) fixed A431 cells using PLEC antibody (83898-1-RR, Clone: 240891A10) at dilution of 1:500 and CoraLite®488-Conjugated Goat Anti-Rabbit IgG(H+L) (SA00013-2).



Biolayer interferometry (BLI) kinetic assays of 83898-1-RR against Human PLEC were performed. The affinity constant is 52.7 pM.