

For Research Use Only

CD25/IL-2RA Recombinant antibody, PBS Only (Detector)

Catalog Number: 83896-1-PBS



Basic Information

Catalog Number:

83896-1-PBS

Size:

2 mg/ml

Source:

Rabbit

Isotype:

IgG

GenBank Accession Number:

BC156627

GeneID (NCBI):

3559

UNIPROT ID:

P01589

Full Name:

interleukin 2 receptor, alpha

Calculated MW:

272 aa, 31 kDa

Observed MW:

60 kDa

Purification Method:

Protein A purification

CloneNo.:

240906A12

Applications

Tested Applications:

WB, Cytometric bead array, Indirect ELISA

Species Specificity:

human

Background Information

Proliferation of T lymphocytes is triggered by the interaction of IL-2 with its specific receptor following T lymphocyte activation. The receptor for IL-2 has three forms, generated by different combinations of three different proteins, the alpha chain (IL-2R alpha), the beta chain (IL-2R beta), and the gamma chain (IL-2R gamma) (PMID: 8476561). IL-2R alpha (also known as CD25) is a type I transmembrane protein present in activated T cells, activated B cells, some thymocytes, myeloid precursors, and oligodendrocytes. CD25 is also found on natural CD4⁺ Foxp3⁺ Treg cells (PMID: 22585674).

Storage

Storage:

Store at -80°C.

The product is shipped with ice packs. Upon receipt, store it immediately at -80°C

Storage Buffer:

PBS Only

For technical support and original validation data for this product please contact:

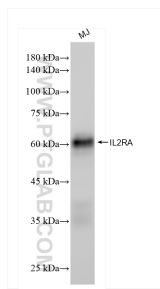
T: 4006900926

E: Proteintech-CN@ptglab.com

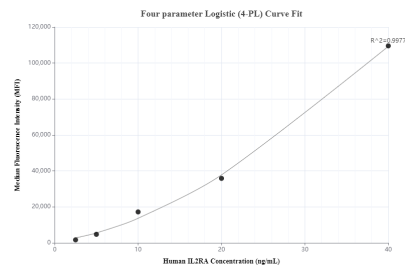
W: ptgcn.com

This product is exclusively available under Proteintech Group brand and is not available to purchase from any other manufacturer.

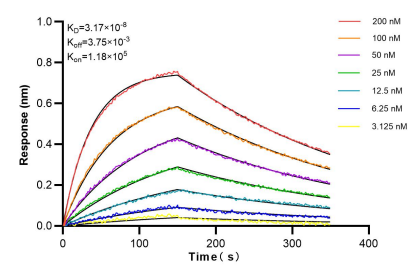
Selected Validation Data



MJ cells were subjected to SDS PAGE followed by western blot with 83896-1-RR (IL2RA antibody) at dilution of 1:10000 incubated at room temperature for 1.5 hours. This data was developed using the same antibody clone with 83896-1-PBS in a different storage buffer formulation.



Cytometric bead array standard curve of MP00837-2, CD25/IL-2RA Recombinant Matched Antibody Pair, PBS Only. Capture antibody: 83896-2-PBS. Detection antibody: 83896-1-PBS. Standard: Eg0408. Range: 2.5-40 ng/mL.



Biolayer interferometry (BLI) kinetic assays of 83896-1-RR against Human CD25/IL2RA were performed. The affinity constant is 31.7 nM.