

For Research Use Only

IL-4 Recombinant antibody, PBS Only (Detector)

Catalog Number: 83894-5-PBS



Basic Information

Catalog Number:

83894-5-PBS

Size:

1 mg/ml

Source:

Rabbit

Isotype:

IgG

GenBank Accession Number:

BC070123

GeneID (NCBI):

3565

UNIPROT ID:

P05112

Full Name:

interleukin 4

Calculated MW:

153 aa, 17 kDa

Purification Method:

Protein A purification

CloneNo.:

240794H7

Applications

Tested Applications:

Cytometric bead array, Sandwich ELISA, Indirect ELISA, Sample test

Species Specificity:

human

Background Information

Storage

Storage:

Store at -80°C.

The product is shipped with ice packs. Upon receipt, store it immediately at -80°C

Storage Buffer:

PBS Only

For technical support and original validation data for this product please contact:

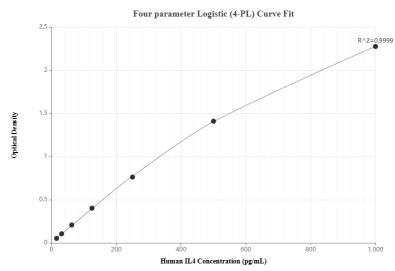
T: 4006900926

E: Proteintech-CN@ptglab.com

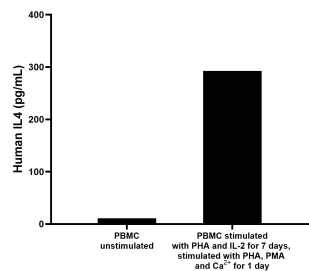
W: ptgcn.com

This product is exclusively available under Proteintech Group brand and is not available to purchase from any other manufacturer.

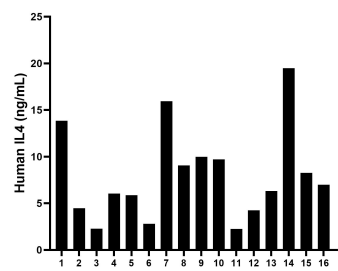
Selected Validation Data



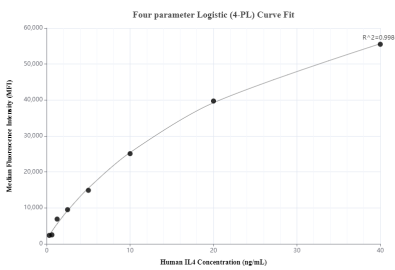
Sandwich ELISA standard curve of MP00829-3, Human IL-4 Recombinant Matched Antibody Pair - PBS only. 83894-2-PBS was coated to a plate as the capture antibody and incubated with serial dilutions of standard Eg0104. 83894-5-PBS was HRP conjugated as the detection antibody. Range: 15.6-1000 pg/mL



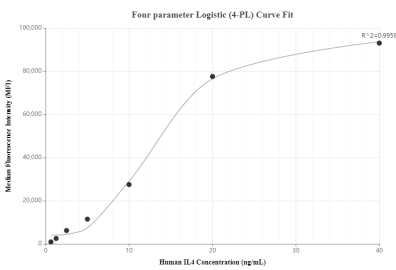
Human peripheral blood mononuclear cells (0.5×10^6 cells/mL) were cultured in RPMI supplemented with 10% fetal bovine serum, $5 \mu\text{g/mL}$ PHA, and 10 ng/mL recombinant human IL-2. After 7 days of culture, cells were changed into DMEM with 10% fetal bovine serum, 10 ng/mL PMA, $1 \mu\text{g/mL}$ Ca^{2+} ionophore, and $5 \mu\text{g/mL}$ PHA. Cell culture supernate was collected after 1d of stimulation and measured 292.5 pg/mL in stimulated PBMC supernatant, 11.2 pg/mL in



Serum of sixteen individual healthy human donors was measured. The human IL-4 concentration of detected samples was determined to be 7.97 ng/mL with a range of 2.25 - 19.49 ng/mL.



Cytometric bead array standard curve of MP00829-2, IL-4 Recombinant Matched Antibody Pair, PBS Only. Capture antibody: 83894-3-PBS. Detection antibody: 83894-5-PBS. Standard: Eg0104. Range: 0.313-40 ng/mL



Cytometric bead array standard curve of MP00829-3, IL-4 Recombinant Matched Antibody Pair, PBS Only. Capture antibody: 83894-2-PBS. Detection antibody: 83894-5-PBS. Standard: Eg0104. Range: 0.625-40 ng/mL