

For Research Use Only

4EBP1 Recombinant antibody, PBS Only (Detector)

Catalog Number: 83890-2-PBS



Basic Information

Catalog Number:

83890-2-PBS

Size:

1 mg/ml

Source:

Rabbit

Isotype:

IgG

Immunogen Catalog Number:

AG5056

GenBank Accession Number:

BC004459

GeneID (NCBI):

1978

UNIPROT ID:

Q13541

Full Name:

eukaryotic translation initiation
factor 4E binding protein 1

Calculated MW:

118 aa, 12 kDa

Purification Method:

Protein A purification

CloneNo.:

241055F11

Applications

Tested Applications:

Cytometric bead array, Sandwich ELISA, Indirect ELISA,
Sample test

Species Specificity:

human

Background Information

Storage

Storage:

Store at -80°C.

The product is shipped with ice packs. Upon receipt, store it immediately at -80°C

Storage Buffer:

PBS Only

For technical support and original validation data for this product please contact:

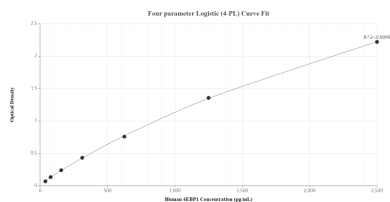
T: 4006900926

E: Proteintech-CN@ptglab.com

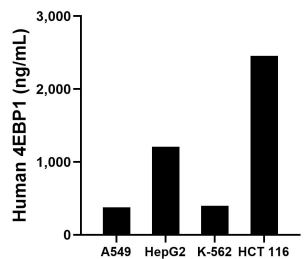
W: ptgcn.com

This product is exclusively available under Proteintech Group brand and is not available to purchase from any other manufacturer.

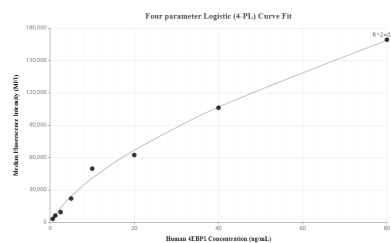
Selected Validation Data



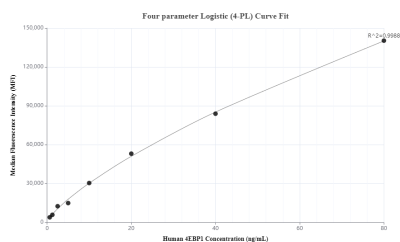
Sandwich ELISA standard curve of MP00559-3, Human 4EBP1 Recombinant Matched Antibody Pair - PBS only. 83890-1-PBS was coated to a plate as the capture antibody and incubated with serial dilutions of standard Ag5056. 83890-2-PBS was HRP conjugated as the detection antibody. Range: 39.06-2500 pg/mL.



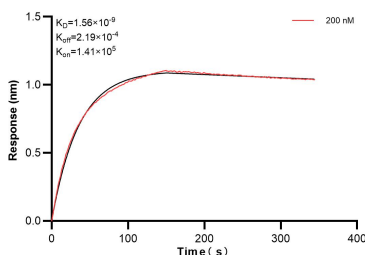
The mean 4EBP1 concentration was determined to be 375.9 ng/mL in A549 cell extract based on a 3.0 mg/mL extract load, 1,210.9 ng/mL in HepG2 cell extract based on a 8.5 mg/mL extract load, 396.7 ng/mL in K-562 cell extract based on a 5.2 mg/mL extract load and 2,456.3 ng/mL in HCT 116 cell extract based on a 6.1 mg/mL extract load.



Cytometric bead array standard curve of MP00559-3, 4EBP1 Recombinant Matched Antibody Pair, PBS Only. Capture antibody: 83890-1-PBS. Detection antibody: 83890-2-PBS. Standard: Ag5056. Range: 0.625-80 ng/mL.



Cytometric bead array standard curve of MP00559-5, 4EBP1 Recombinant Matched Antibody Pair, PBS Only. Capture antibody: 83890-3-PBS. Detection antibody: 83890-2-PBS. Standard: Ag5056. Range: 0.625-80 ng/mL.



Biolayer interferometry (BLI) kinetic assay of 83890-2-PBS against Human 4EBP1 was performed. The affinity constant is 1.56 nM.