

For Research Use Only

Mouse CD200R1 Recombinant monoclonal antibody, PBS Only (Detector)

Catalog Number: 83889-8-PBS



Basic Information

Catalog Number: 83889-8-PBS	GenBank Accession Number: NM_021325.3	Purification Method: Protein A purification
Source: Rabbit	GeneID (NCBI): 57781	CloneNo.: 252758G1
Isotype: IgG	UNIPROT ID: Q9ES57	
Immunogen Catalog Number: EG0988	Full Name: CD200 receptor 1	
	Calculated MW: 36 kDa	

Applications

Tested Applications:
Cytometric bead array, Indirect ELISA

Species Specificity:
mouse

Background Information

Storage

Storage:
Store at -80°C.
The product is shipped with ice packs. Upon receipt, store it immediately at -80°C

Storage Buffer:
PBS only, pH7.3

For technical support and original validation data for this product please contact:

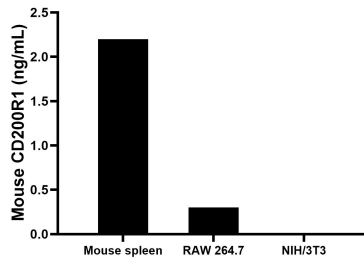
T: 4006900926

E: Proteintech-CN@ptglab.com

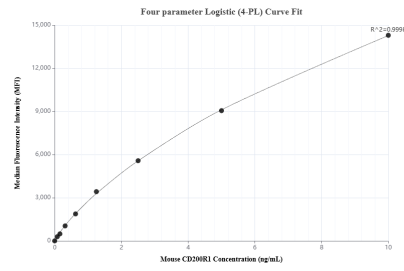
W: ptgcn.com

This product is exclusively available under Proteintech Group brand and is not available to purchase from any other manufacturer.

Selected Validation Data



The mean CD200R1 concentration was determined to be 2.2 ng/mL in mouse spleen tissue extract based on a 1.2 mg/mL extract load, 0.3 ng/mL in RAW 264.7 cell extract based on a 1.2 mg/mL extract load, NIH/3T3 cell extract were served as a negative control.



Cytometric bead array standard curve of MP00835-3, MOUSE CD200R1 Recombinant Matched Antibody Pair, PBS Only. Capture antibody: 83889-9-PBS. Detection antibody: 83889-8-PBS. Standard: Eg0988. Range: 0.078-10 ng/mL.