

For Research Use Only

# UBAP2 Recombinant antibody, PBS Only (Capture)

Catalog Number: 83885-2-PBS

Featured Product



## Basic Information

Catalog Number:

83885-2-PBS

Size:

1 mg/ml

Source:

Rabbit

Isotype:

IgG

Immunogen Catalog Number:

AG30572

GenBank Accession Number:

NM\_018449

GeneID (NCBI):

55833

UNIPROT ID:

Q5T6F2

Full Name:

ubiquitin associated protein 2

Calculated MW:

117 kDa

Observed MW:

140 kDa

Purification Method:

Protein A purification

CloneNo.:

240890F6

## Applications

Tested Applications:

WB, IF/ICC, FC (Intra), Cytometric bead array, Indirect ELISA

Species Specificity:

human

## Background Information

### Storage

Storage:

Store at -80°C.

The product is shipped with ice packs. Upon receipt, store it immediately at -80°C

Storage Buffer:

PBS Only

For technical support and original validation data for this product please contact:

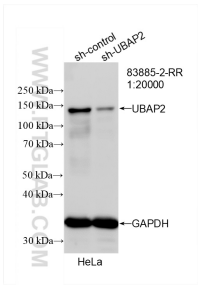
T: 4006900926

E: [Proteintech-CN@ptglab.com](mailto:Proteintech-CN@ptglab.com)

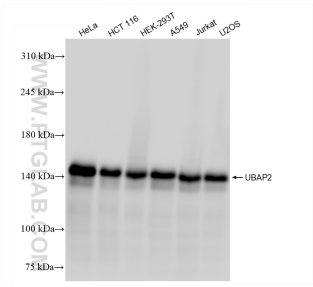
W: [ptgcn.com](http://ptgcn.com)

This product is exclusively available under Proteintech Group brand and is not available to purchase from any other manufacturer.

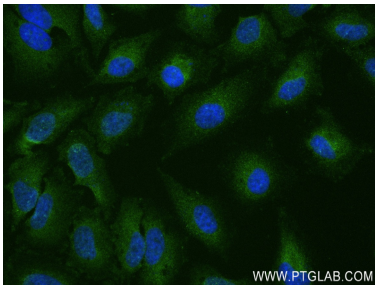
Selected Validation Data



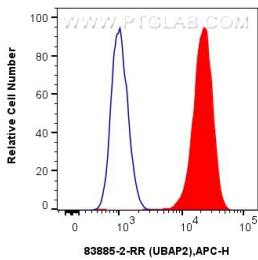
WB result of UBAP2 antibody (83885-2-RR; 1:20000; incubated at room temperature for 1.5 hours) with sh-Control and sh-UBAP2 transfected HeLa cells. This data was developed using the same antibody clone with 83885-2-PBS in a different storage buffer formulation.



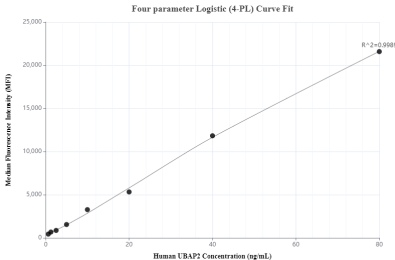
Various lysates were subjected to SDS PAGE followed by western blot with 83885-2-RR (UBAP2 antibody) at dilution of 1:20000 incubated at room temperature for 1.5 hours. This data was developed using the same antibody clone with 83885-2-PBS in a different storage buffer formulation.



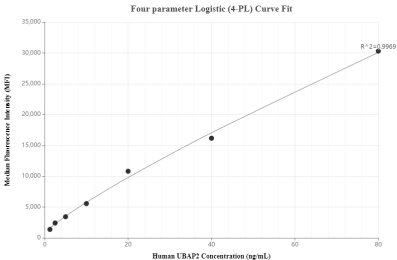
Immunofluorescent analysis of (4% PFA) fixed HeLa cells using UBAP2 antibody (83885-2-RR, Clone: 240890F6 ) at dilution of 1:250 and CoraLite®488-Conjugated AffiniPure Goat Anti-Rabbit IgG(H+L) (SA00013-2). This data was developed using the same antibody clone with 83885-2-PBS in a different storage buffer formulation.



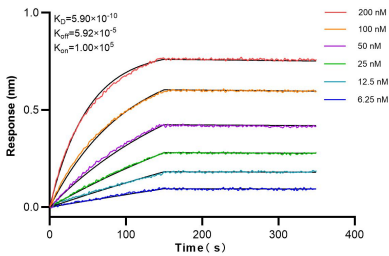
1x10<sup>6</sup> U-2 OS were intracellularly stained with 0.25 ug UBAP2 Recombinant antibody (83885-2-RR, Clone:240890F6) and APC-Conjugated AffiniPure Goat Anti-Rabbit IgG(H+L)(red), or 0.25 ug Isotype Control (blue). Cells were fixed with 4% PFA and permeabilized with Flow Cytometry Perm Buffer (PF00011-C). This data was developed using the same antibody clone with 83885-2-PBS in a different storage buffer formulation.



Cytometric bead array standard curve of MP00850-2, UBAP2 Recombinant Matched Antibody Pair, PBS Only. Capture antibody: 83885-2-PBS. Detection antibody: 83885-1-PBS. Standard: Ag30572. Range: 0.625-80 ng/mL.



Cytometric bead array standard curve of MP00850-3, UBAP2 Recombinant Matched Antibody Pair, PBS Only. Capture antibody: 83885-2-PBS. Detection antibody: 83885-4-PBS. Standard: Ag30572. Range: 1.25-80 ng/mL.



Biolayer interferometry (BLI) kinetic assays of 83885-2-RR against Human UBAP2 were performed. The affinity constant is 0.59 nM.