

For Research Use Only

# S1PR2 Recombinant antibody, PBS Only (Capture)

Catalog Number: 83881-2-PBS



## Basic Information

Catalog Number:

83881-2-PBS

Size:

1 mg/ml

Source:

Rabbit

Isotype:

IgG

Immunogen Catalog Number:

AG15470

GenBank Accession Number:

BC069598

GeneID (NCBI):

9294

UNIPROT ID:

O95136

Full Name:

sphingosine-1-phosphate receptor 2

Calculated MW:

353 aa, 39 kDa

Purification Method:

Protein A purification

CloneNo.:

241067H8

## Applications

Tested Applications:

Cytometric bead array, Sandwich ELISA, Indirect ELISA,  
Sample test

Species Specificity:

human

## Background Information

### Storage

Storage:

Store at -80°C.

**The product is shipped with ice packs. Upon receipt, store it immediately at -80°C**

Storage Buffer:

PBS Only

For technical support and original validation data for this product please contact:

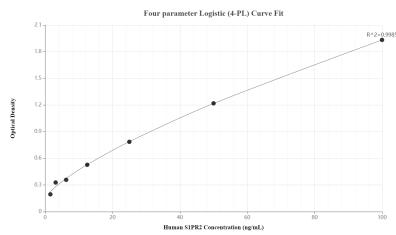
T: 4006900926

E: Proteintech-CN@ptglab.com

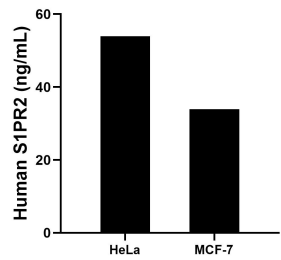
W: ptgcn.com

**This product is exclusively available under Proteintech Group brand and is not available to purchase from any other manufacturer.**

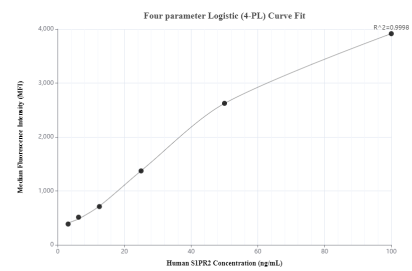
## Selected Validation Data



Sandwich ELISA standard curve of MP00831-1, Human S1PR2 Recombinant Matched Antibody Pair - PBS only. 83881-2-PBS was coated to a plate as the capture antibody and incubated with serial dilutions of standard Ag15470. 83881-1-PBS was HRP conjugated as the detection antibody. Range: 1.56-100 ng/mL.



The mean S1PR2 concentration was determined to be 53.98 ng/mL in HeLa cell extract based on a 1.20 mg/mL extract load and 33.91 ng/mL in MCF-7 cell extract based on a 1.20 mg/mL extract load.



Cytometric bead array standard curve of MP00831-1, S1PR2 Recombinant Matched Antibody Pair, PBS Only. Capture antibody: 83881-2-PBS. Detection antibody: 83881-1-PBS. Standard: Ag15470. Range: 3.125-100 ng/mL.