

For Research Use Only

S1PR2 Recombinant antibody, PBS Only (Detector)

Catalog Number: 83881-1-PBS



Basic Information

Catalog Number: 83881-1-PBS	GenBank Accession Number: BC069598	Purification Method: Protein A purification
Size: 1 mg/ml	GeneID (NCBI): 9294	CloneNo.: 241067B10
Source: Rabbit	UNIPROT ID: O95136	
Isotype: IgG	Full Name: sphingosine-1-phosphate receptor 2	
Immunogen Catalog Number: AG15470	Calculated MW: 353 aa, 39 kDa	

Applications

Tested Applications:
Cytometric bead array, Sandwich ELISA, Indirect ELISA,
Sample test

Species Specificity:
human

Background Information

Storage

Storage:
Store at -80°C.
The product is shipped with ice packs. Upon receipt, store it immediately at -80°C

Storage Buffer:
PBS Only

For technical support and original validation data for this product please contact:

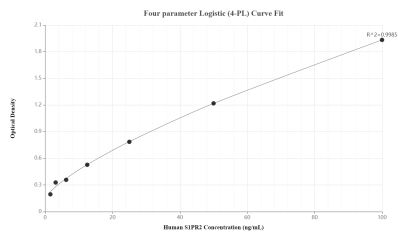
T: 4006900926

E: Proteintech-CN@ptglab.com

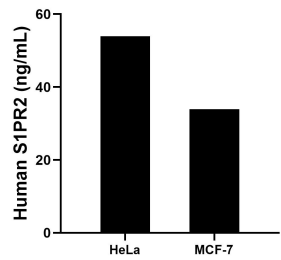
W: ptgcn.com

This product is exclusively available under Proteintech Group brand and is not available to purchase from any other manufacturer.

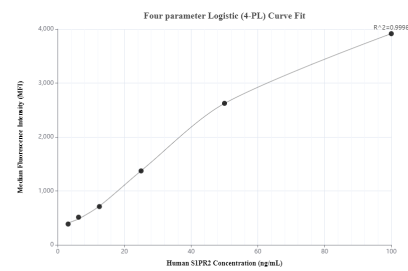
Selected Validation Data



Sandwich ELISA standard curve of MP00831-1, Human S1PR2 Recombinant Matched Antibody Pair - PBS only. 83881-2-PBS was coated to a plate as the capture antibody and incubated with serial dilutions of standard Ag15470. 83881-1-PBS was HRP conjugated as the detection antibody. Range: 1.56-100 ng/mL.



The mean S1PR2 concentration was determined to be 53.98 ng/mL in HeLa cell extract based on a 1.20 mg/mL extract load and 33.91 ng/mL in MCF-7 cell extract based on a 1.20 mg/mL extract load.



Cytometric bead array standard curve of MP00831-1, S1PR2 Recombinant Matched Antibody Pair, PBS Only. Capture antibody: 83881-2-PBS. Detection antibody: 83881-1-PBS. Standard: Ag15470. Range: 3.125-100 ng/mL.