

For Research Use Only

AES Recombinant antibody, PBS Only (Detector)

Catalog Number: 83878-4-PBS



Basic Information

Catalog Number:	83878-4-PBS	GenBank Accession Number:	BC113735	Purification Method:	Protein A purification
Size:	1 mg/ml	GeneID (NCBI):	166	CloneNo.:	240987H7
Source:	Rabbit	UNIPROT ID:	Q08117		
Isotype:	IgG	Full Name:	amino-terminal enhancer of split		
Immunogen Catalog Number:	AG21021	Calculated MW:	264 aa, 29 kDa		

Applications

Tested Applications:
Cytometric bead array, Sandwich ELISA, Indirect ELISA, Sample test

Species Specificity:
human

Background Information

Storage

Storage:
Store at -80°C.
The product is shipped with ice packs. Upon receipt, store it immediately at -80°C

Storage Buffer:
PBS Only

For technical support and original validation data for this product please contact:

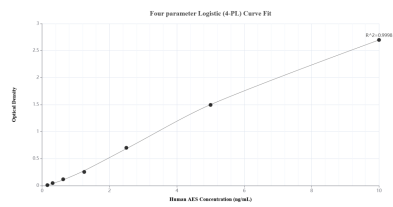
T: 4006900926

E: Proteintech-CN@ptglab.com

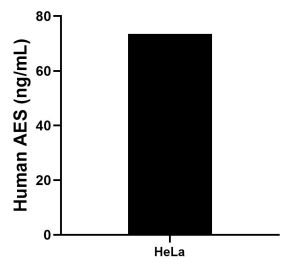
W: ptgcn.com

This product is exclusively available under Proteintech Group brand and is not available to purchase from any other manufacturer.

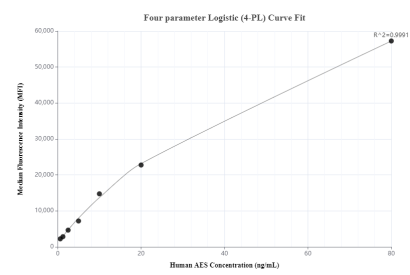
Selected Validation Data



Sandwich ELISA standard curve of MP00860-1, Human AES Recombinant Matched Antibody Pair - PBS only. 83878-1-PBS was coated to a plate as the capture antibody and incubated with serial dilutions of standard Ag21021. 83878-4-PBS was HRP conjugated as the detection antibody. Range: 0.156-10 ng/mL



The mean AES concentration was determined to be 73.51 ng/mL in HeLa cell extract based on a 1.30 mg/mL extract load.



Cytometric bead array standard curve of MP00860-1, AES Recombinant Matched Antibody Pair, PBS Only. Capture antibody: 83878-1-PBS. Detection antibody: 83878-4-PBS. Standard: Ag21021. Range: 0.625-80 ng/mL