

For Research Use Only

AES Recombinant antibody, PBS Only (Capture)

Catalog Number: 83878-1-PBS



Basic Information

Catalog Number: 83878-1-PBS	GenBank Accession Number: BC113735	Purification Method: Protein A purification
Size: 1 mg/ml	GeneID (NCBI): 166	CloneNo.: 240987C3
Source: Rabbit	UNIPROT ID: Q08117	
Isotype: IgG	Full Name: amino-terminal enhancer of split	
Immunogen Catalog Number: AG21021	Calculated MW: 264 aa, 29 kDa	

Applications

Tested Applications:
Cytometric bead array, Sandwich ELISA, Indirect ELISA, Sample test

Species Specificity:
human

Background Information

Storage

Storage:
Store at -80°C.
The product is shipped with ice packs. Upon receipt, store it immediately at -80°C

Storage Buffer:
PBS Only

For technical support and original validation data for this product please contact:

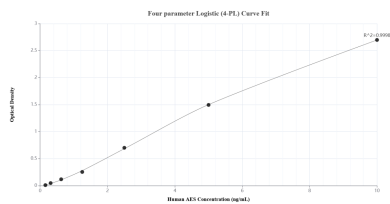
T: 4006900926

E: Proteintech-CN@ptglab.com

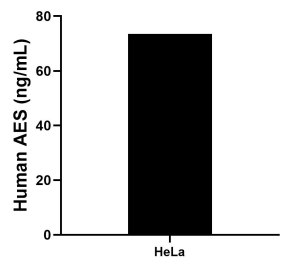
W: ptgcn.com

This product is exclusively available under Proteintech Group brand and is not available to purchase from any other manufacturer.

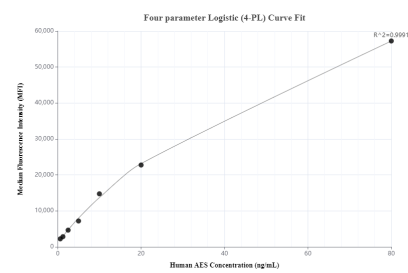
Selected Validation Data



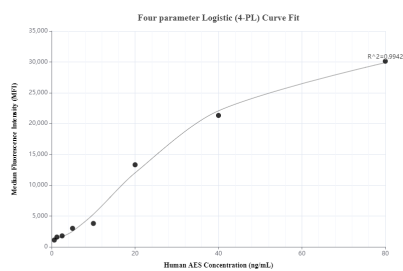
Sandwich ELISA standard curve of MP00860-1, Human AES Recombinant Matched Antibody Pair - PBS only. 83878-1-PBS was coated to a plate as the capture antibody and incubated with serial dilutions of standard Ag21021. 83878-4-PBS was HRP conjugated as the detection antibody. Range: 0.156-10 ng/mL.



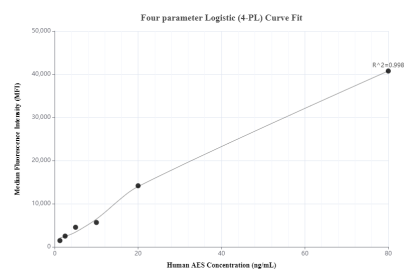
The mean AES concentration was determined to be 73.51 ng/mL in HeLa cell extract based on a 1.30 mg/mL extract load.



Cytometric bead array standard curve of MP00860-1, AES Recombinant Matched Antibody Pair, PBS Only. Capture antibody: 83878-1-PBS. Detection antibody: 83878-4-PBS. Standard: Ag21021. Range: 0.625-80 ng/mL.



Cytometric bead array standard curve of MP00860-2, AES Recombinant Matched Antibody Pair, PBS Only. Capture antibody: 83878-1-PBS. Detection antibody: 83878-3-PBS. Standard: Ag21021. Range: 0.625-80 ng/mL.



Cytometric bead array standard curve of MP00860-3, AES Recombinant Matched Antibody Pair, PBS Only. Capture antibody: 83878-1-PBS. Detection antibody: 83878-2-PBS. Standard: Ag21021. Range: 1.25-80 ng/mL.