

For Research Use Only

EXOSC1 Recombinant antibody, PBS Only

Catalog Number: 83875-5-PBS

Featured Product



Basic Information

Catalog Number:

83875-5-PBS

Size:

1 mg/ml

Source:

Rabbit

Isotype:

IgG

Immunogen Catalog Number:

AG3286

GenBank Accession Number:

BC022067

GeneID (NCBI):

51013

UNIPROT ID:

Q9Y3B2

Full Name:

exosome component 1

Calculated MW:

195 aa, 21 kDa

Observed MW:

21 kDa

Purification Method:

Protein A purification

CloneNo.:

240938C6

Applications

Tested Applications:

WB, Indirect ELISA

Species Specificity:

human, rat

Background Information

EXOSC1 is a core component of the exosome. The mammalian exosome is required for rapid degradation of AU rich element-containing RNAs but not for poly(A) shortening.

Storage

Storage:

Store at -80°C.

The product is shipped with ice packs. Upon receipt, store it immediately at -80°C

Storage Buffer:

PBS Only

For technical support and original validation data for this product please contact:

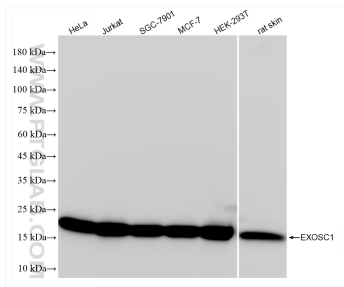
T: 4006900926

E: Proteintech-CN@ptglab.com

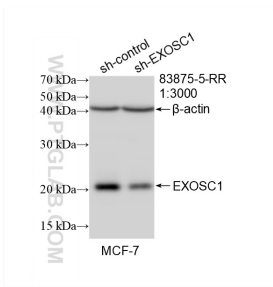
W: ptgcn.com

This product is exclusively available under Proteintech Group brand and is not available to purchase from any other manufacturer.

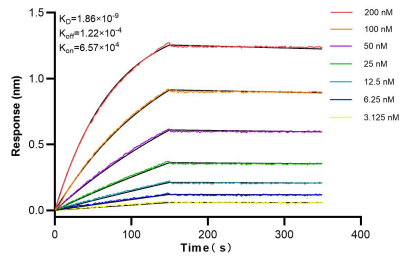
Selected Validation Data



Various lysates were subjected to SDS PAGE followed by western blot with 83875-5-RR (EXOSC1 antibody) at dilution of 1:10000 incubated at room temperature for 1.5 hours. This data was developed using the same antibody clone with 83875-5-PBS in a different storage buffer formulation.



WB result of EXOSC1 antibody (83875-5-RR; 1:3000; incubated at room temperature for 1.5 hours) with sh-Control and sh-EXOSC1 transfected MCF-7 cells. This data was developed using the same antibody clone with 83875-5-PBS in a different storage buffer formulation.



Biolayer interferometry (BLI) kinetic assays of 83875-5-RR against Human EXOSC1 were performed. The affinity constant is 1.86 nM.