

For Research Use Only

# CLUAP1 Recombinant antibody

Catalog Number: 83849-3-RR



## Basic Information

Catalog Number:

83849-3-RR

Size:

1000 ug/ml

Source:

Rabbit

Isotype:

IgG

Immunogen Catalog Number:

AG11419

GenBank Accession Number:

BC017070

GeneID (NCBI):

23059

UNIPROT ID:

Q96AJ1

Full Name:

clusterin associated protein 1

Calculated MW:

413 aa, 48 kDa

Observed MW:

60 kDa

Purification Method:

Protein A purification

CloneNo.:

240854C10

Recommended Dilutions:

WB 1:5000-1:50000

## Applications

Tested Applications:

WB, ELISA

Species Specificity:

human

Positive Controls:

WB : Y79 cells, HepG2 cells, COLO 320 cells, HeLa cells, BxPC-3 cells

## Background Information

CLUAP1 (Clusterin-associated protein 1) was originally identified as a protein that interacts with CLU/clusterin, and whose gene is frequently upregulated in colon cancer (PMID: 15480429). Overexpression of CLUAP1 was also observed in osteosarcoma (PMID: 17203229). CLUAP1 is most abundantly expressed in the testis among normal tissues (PMID: 15480429; 17203229). Studies reveal that CLUAP1 has a role in ciliogenesis and cilia-dependent development (PMID: 23351563; 23742838; 24970261).

## Storage

Storage:

Store at -20°C. Stable for one year after shipment.

Storage Buffer:

PBS with 0.02% sodium azide and 50% glycerol pH 7.3.

Aliquoting is unnecessary for -20°C storage

For technical support and original validation data for this product please contact:

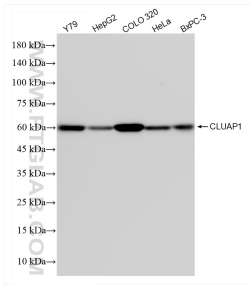
T: 4006900926

E: [Proteintech-CN@ptglab.com](mailto:Proteintech-CN@ptglab.com)

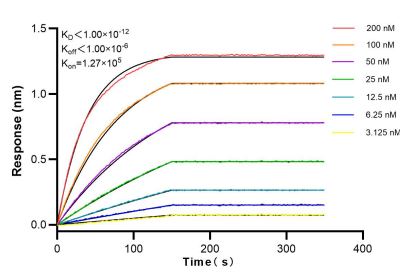
W: [ptgcn.com](http://ptgcn.com)

This product is exclusively available under Proteintech Group brand and is not available to purchase from any other manufacturer.

## Selected Validation Data



Various lysates were subjected to SDS PAGE followed by western blot with 83849-3-RR (CLUAP1 antibody) at dilution of 1:10000 incubated at room temperature for 1.5 hours.



Biolayer interferometry (BLI) kinetic assays of 83849-3-RR against Human CLUAP1 were performed. The affinity constant is below 1 pM.