

For Research Use Only

SLC31A1 Recombinant antibody, PBS Only (Detector)

Catalog Number: 83844-1-PBS



Basic Information

Catalog Number:

83844-1-PBS

Concentration:

1 mg/ml

Source:

Rabbit

Isotype:

IgG

Immunogen Catalog Number:

AG26601

GenBank Accession Number:

BC013611

GeneID (NCBI):

1317

UNIPROT ID:

O15431

Full Name:

solute carrier family 31 (copper transporters), member 1

Calculated MW:

21 kDa

Purification Method:

Protein A purification

CloneNo.:

240868A11

Applications

Tested Applications:

Cytometric bead array, Sandwich ELISA, Indirect ELISA, Sample test

Species Specificity:

human

Background Information

Storage

Storage:

Store at -80°C.

The product is shipped with ice packs. Upon receipt, store it immediately at -80°C

Storage Buffer:

PBS Only

For technical support and original validation data for this product please contact:

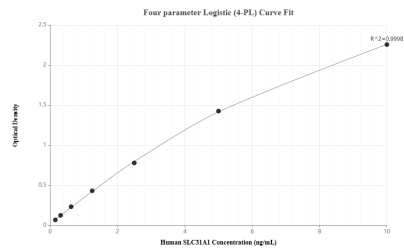
T: 4006900926

E: Proteintech-CN@ptglab.com

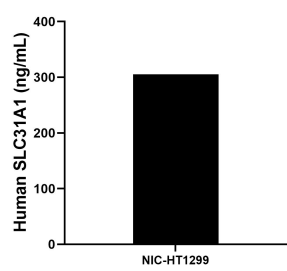
W: ptgcn.com

This product is exclusively available under Proteintech Group brand and is not available to purchase from any other manufacturer.

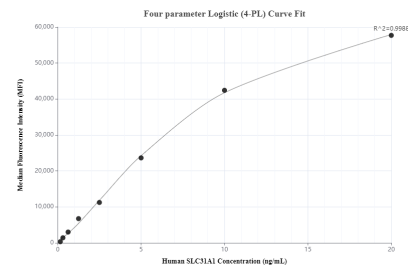
Selected Validation Data



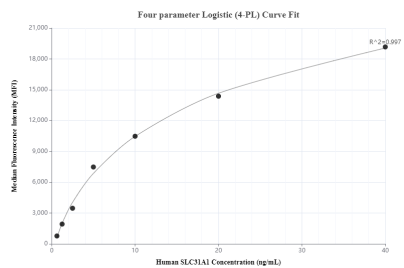
Sandwich ELISA standard curve of MP00817-4, Human SLC31A1 Recombinant Matched Antibody Pair - PBS only. 83844-7-PBS was coated to a plate as the capture antibody and incubated with serial dilutions of standard Ag26601. 83844-1-PBS was HRP conjugated as the detection antibody. Range: 0.156-10 ng/mL



The mean SLC31A1 concentration was determined to be 305.42 ng/mL in NIC-HT1299 cell extract based on a 1.5 mg/mL extract load.



Cytometric bead array standard curve of MP00817-1, SLC31A1 Recombinant Matched Antibody Pair, PBS Only. Capture antibody: 83844-3-PBS. Detection antibody: 83844-1-PBS. Standard: Ag26601. Range: 0.156-20 ng/mL



Cytometric bead array standard curve of MP00817-3, SLC31A1 Recombinant Matched Antibody Pair, PBS Only. Capture antibody: 83844-2-PBS. Detection antibody: 83844-1-PBS. Standard: Ag26601. Range: 0.625-40 ng/mL