

For Research Use Only

PKC Alpha Recombinant antibody

Catalog Number: 83840-6-RR



Basic Information

Catalog Number: 83840-6-RR	GenBank Accession Number: BC109274	Purification Method: Protein A purification
Concentration: 1000 ug/ml	GeneID (NCBI): 5578	CloneNo.: 240926E1
Source: Rabbit	UNIPROT ID: P17252	Recommended Dilutions: WB 1:5000-1:50000 IHC 1:400-1:1600 IF-P 1:200-1:800 IF/ICC 1:125-1:500
Isotype: IgG	Full Name: protein kinase C, alpha	
Immunogen Catalog Number: AG1025	Observed MW: 77 kDa	

Applications

Tested Applications: WB, IHC, IF/ICC, IF-P, FC (Intra), ELISA	Positive Controls:
Species Specificity: human	WB : HeLa cells, HEK-293 cells, Jurkat cells, NIH/3T3 cells, C6 cells, human platelets tissue, rat brain tissue
Note-IHC: suggested antigen retrieval with TE buffer pH 9.0; (*) Alternatively, antigen retrieval may be performed with citrate buffer pH 6.0	IHC : human stomach cancer tissue,
	IF-P : rat eye tissue,
	IF/ICC : HeLa cells,

Background Information

Protein kinase C (PKC) is a family of serine- and threonine-specific protein kinases that can be activated by calcium and the second messenger diacylglycerol. PKC family members phosphorylate a wide variety of protein targets and are known to be involved in diverse cellular signaling pathways. PKC family members also serve as major receptors for phorbol esters, a class of tumor promoters. Each member of the PKC family has a specific expression profile and is believed to play a distinct role in cells. PRKCA is one of the PKC family members. This kinase has been reported to play roles in many different cellular processes, such as cell adhesion, cell transformation, cell cycle checkpoint, and cell volume control. Knockout studies in mice suggest that this kinase may be a fundamental regulator of cardiac contractility and Ca(2+) handling in myocytes.

Storage

Storage:
Store at -20°C. Stable for one year after shipment.
Storage Buffer:
PBS with 0.02% sodium azide and 50% glycerol pH 7.3.
Aliquoting is unnecessary for -20°C storage

For technical support and original validation data for this product please contact:

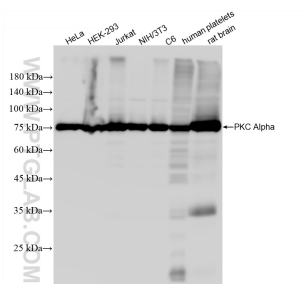
T: 4006900926

E: Proteintech-CN@ptglab.com

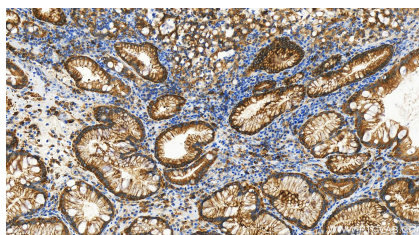
W: ptgcn.com

This product is exclusively available under Proteintech Group brand and is not available to purchase from any other manufacturer.

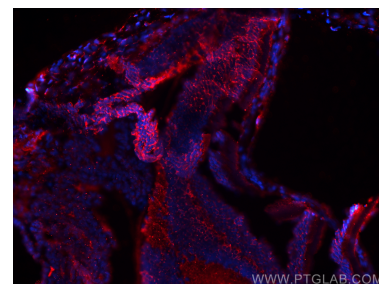
Selected Validation Data



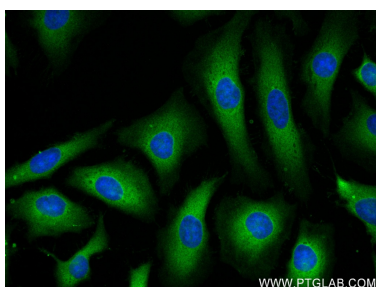
Various lysates were subjected to SDS PAGE followed by western blot with 83840-6-RR (PKC Alpha antibody) at dilution of 1:10000 incubated at room temperature for 1.5 hours.



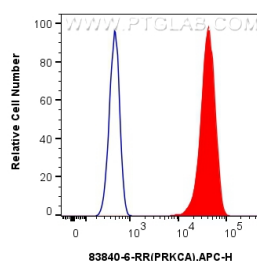
Immunohistochemical analysis of paraffin-embedded human stomach cancer tissue slide using 83840-6-RR (PKC Alpha antibody) at dilution of 1:800 (under 20x lens). Heat mediated antigen retrieval with Tris-EDTA buffer(pH9).



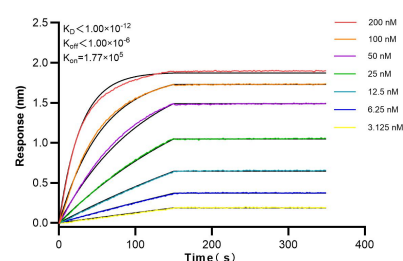
Immunofluorescent analysis of (4% PFA) fixed paraffin-embedded rat eye tissue using PKC Alpha antibody (83840-6-RR, Clone: 240926E1) at dilution of 1:400 and CoraLite®594-Conjugated Goat Anti-Rabbit IgG(H+L) (SA00013-4). Heat mediated antigen retrieval with Tris-EDTA buffer (pH 9.0).



Immunofluorescent analysis of (-20°C Ethanol) fixed HeLa cells using PRKCA antibody (83840-6-RR, Clone: 240926E1) at dilution of 1:250 and CoraLite®488-Conjugated AffiniPure Goat Anti-Rabbit IgG(H+L) (SA00013-2).



1x10⁶ HepG2 cells were intracellularly stained with 0.25 ug PRKCA Recombinant antibody (83840-6-RR, Clone:240926E1) and APC-Conjugated AffiniPure Goat Anti-Rabbit IgG(H+L)(red), or 0.25 ug Isotype Control (blue). Cells were fixed with 4% PFA and permeabilized with Flow Cytometry Perm Buffer (PF00011-C).



Biolayer interferometry (BLI) kinetic assays of 83840-6-RR against Human PRKCA were performed. The affinity constant is below 1 pM.