

For Research Use Only

GOLGA5 Recombinant monoclonal antibody, PBS Only (Capture)

Catalog Number: 83839-4-PBS



Basic Information

Catalog Number:

83839-4-PBS

Source:

Rabbit

Isotype:

IgG

Immunogen Catalog Number:

AG35031

GenBank Accession Number:

BC023021

GeneID (NCBI):

9950

UNIPROT ID:

Q8TBA6

Full Name:

golgi autoantigen, golgin subfamily a, 5

Calculated MW:

83 kDa

Purification Method:

Protein A purification

CloneNo.:

240893H2

Applications

Tested Applications:

Cytometric bead array, Indirect ELISA

Species Specificity:

human

Background Information

Storage

Storage:

Store at -80°C.

The product is shipped with ice packs. Upon receipt, store it immediately at -80°C

Storage Buffer:

PBS only, pH7.3

For technical support and original validation data for this product please contact:

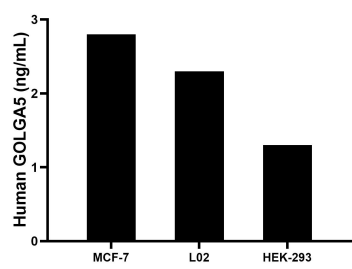
T: 4006900926

E: Proteintech-CN@ptglab.com

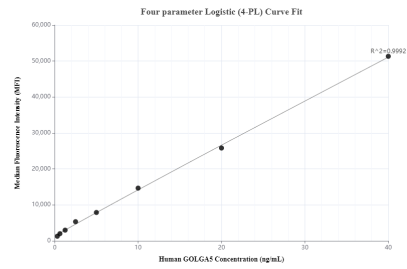
W: ptgcn.com

This product is exclusively available under Proteintech Group brand and is not available to purchase from any other manufacturer.

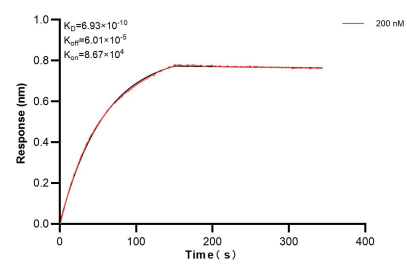
Selected Validation Data



The mean GOLGA5 concentration was determined to be 2.8 ng/mL in MCF-7 cell extract based on a 1.2 mg/mL extract load, 2.3 ng/mL in L02 cell extract based on a 1.2 mg/mL extract load, 1.3 ng/mL in HEK-293 cell extract based on a 1.2 mg/mL extract load.



Cytometric bead array standard curve of MP00813-2, GOLGA5 Recombinant Matched Antibody Pair, PBS Only. Capture antibody: 83839-2-PBS. Detection antibody: 83839-2-PBS. Standard: Ag35031. Range: 0.313-40 ng/mL.



Biolayer Interferometry (BLI) kinetic assay of 83839-4-PBS against Human GOLGA5 was performed. The affinity constant is 0.693 nM.